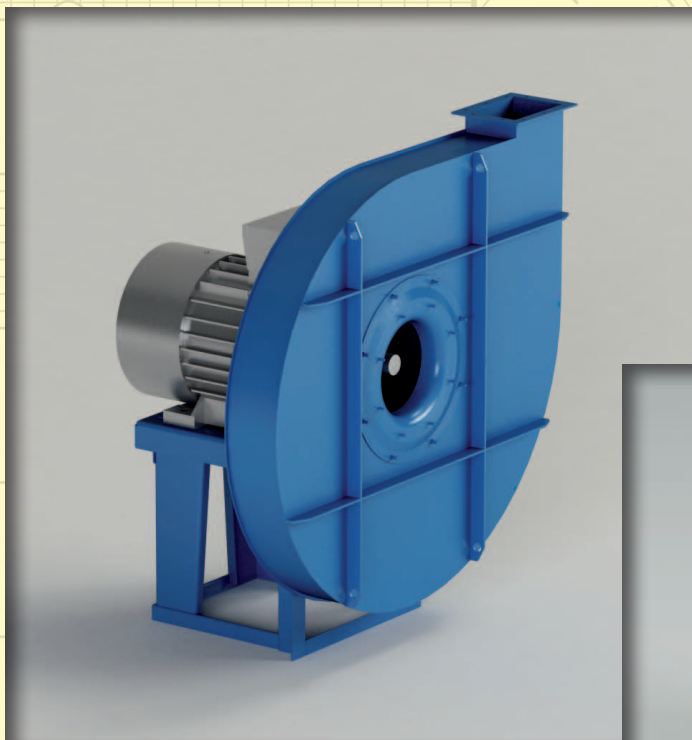


Mod. **VAPE/P**

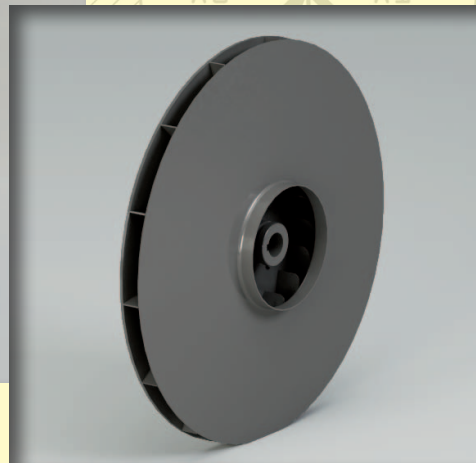


$Q = 140 \div 7200 \text{m}^3/\text{h}$

$Q = 0.04 \div 2 \text{m}^3/\text{s}$

$p_t = 100 \div 2000 \text{mmH}_2\text{O}$

$p_t = 1000 \div 20000 \text{Pa}$



**Campo di lavoro**

Portate basse. Pressioni alte.

**Tipo di pala**

Curva, positiva, vedi pag. 2.3.

**Applicazioni**

Per trasporto pneumatico, polveri, essiccazione, pressurizzazione. Adatto per impieghi nel campo industriale delle fonderie, pastifici, forni, chimico.

**Esecuzioni costruttive standard**

Es.1-Es.4-Es.5-Es.8-Es.9-Es.12, vedi pag. 2.5 - 2.6.

**Temperature del fluido standard**

-10÷+60°C. Per altre temperature vedi da pag. 1.12 a pag. 1.15.

**Tipo di costruzione**

Ventilatore in lamiera di Fe360, girante in Fe360 equilibrata staticamente e dinamicamente. Per altri materiali vedi da pag. 1.12 a pag. 1.15.

**Dati di funzionamento**

Condizioni dell'aria all'aspirazione T=20°C, 0m.s.l.m. e ρ=1.205 kg/m<sup>3</sup>.

**Rumorosità**

Espressa in potenza sonora L<sub>wA</sub> [dB(A)] rilevata in campo libero con ventilatore canalizzato, vedi da pag. 1.43 a pag. 1.49.

**Orientamenti**

N°8 RD (rotazione oraria vista lato trasmissione) e N°8 LG. Ventilatore in versione imbullonata orientabile per le taglie 400-630, con supporto anteriore e quindi non orientabile dalla grandezza 710 a trasmissione, sempre orientabile nei ventilatori direttamente accoppiati senza supporto anteriore. Vedi pag. 2.7.

**Costruzioni speciali**

Vedi da pag. 2.20 a pag. 2.30.

**Avviamento ventilatore**

L'avviamento deve avvenire con ventilatore parzializzato, in funzione dell'assorbimento massimo del ventilatore.

**Classi giranti**

La seguente tabella fa riferimento a condizioni di lavoro standard. In condizioni di esercizio gravose si consiglia di contattare il servizio clienti di CORAL per conoscere la tipologia di girante più idonea.

| GRANDEZZA<br>VENTILATORE<br>• Grandeur • Size<br>• Größe • Tamaño | RPM MASSIMO<br>• Maxi tours/min. • Max rpm<br>• Max. U/min • R.p.m. máx. |           |            |
|---|--|-----------|------------|
|   | CLASSE I   | CLASSE II | CLASSE III |
| VAPE400   | 5000   |           |            |
| VAPE450/R   | 5000   |           |            |
| VAPE450   | 5000   |           |            |
| VAPE500   | 5000   |           |            |
| VAPE560/R   | 5000   |           |            |
| VAPE560   | 4700   | 5000      |            |
| VAPE630/R   | 4400   | 4850      |            |
| VAPE630   | 4100   | 4550      | 5000       |
| VAPE710/R   | 3700   | 4100      | 4500       |
| VAPE710   | 3550   | 3850      | 4250       |
| VAPE800/R   | 3400   | 3700      | 4000       |
| VAPE800   | 3250   | 3550      | 3850       |
| VAPE900/R   | 3100   | 3400      | 3700       |
| VAPE900   | 2950   | 3250      | 3550       |

**VALORI VALIDI FINO A 60°C**

• Valeurs valables jusqu'à 60°C • Values valid up to 60°C  
• Werte bis 60°C gültig • Valores válidos hasta 60°C

| FRA<br>• entre<br>• between<br>• zwischen<br>• entre | 60°C  | E<br>• et<br>• and<br>• und<br>• y | 100°C | DECLASSARE VELOCITÀ<br>• déclasser vitesse<br>• degrade speed<br>• Geschwindigkeit herabsetzen<br>• rebajar velocidad | 4%  |
|--|-------|------------------------------------|-------|---|-----|
|  | 100°C |                                    | 150°C |   | 10% |
|  | 150°C |                                    | 200°C |   | 16% |
|  | 200°C |                                    | 250°C |   | 23% |
|  | 250°C |                                    | 300°C |   | 30% |
|  | 300°C |                                    | 350°C |   | 37% |
|  | 350°C |                                    | 400°C |   | 45% |
|  | 400°C |                                    | 450°C |   | 54% |
|  | 450°C |                                    | 500°C |   | 64% |

■ **Domaine de travail**

Faibles débits. Hautes pressions.

**Type d'ailette**

Courbée, positive, voir page 2.3.

**Applications**

Pour transport pneumatique, poussières, séchage, pressurisation. Convient à l'emploi dans le domaine industriel des fonderies, fabriques de pâtes, fours, chimique.

**Configurations de constructions standard**

Ex.1 - Ex.4 - Ex.5 - Ex.8 - Ex.9 - Ex.12, voir pages 2.5 - 2.6.

**Températures du fluide standard**

-10 ÷ +60°C. Pour d'autres températures voir pages 1.12-1.15.

**Type de fabrication**

Ventilateur en tôle de Fe360, turbine en Fe360 équilibrée statiquement et dynamiquement. Pour d'autres matériaux, voir pages 1.12-1.15.

**Données de fonctionnement**

Conditions de l'air à l'aspiration T=20°C, 0 m asl et ρ=1.205 kg/m<sup>3</sup>.

**Niveau sonore**

Exprimé en puissance sonore L<sub>wA</sub> [dB(A)], relevé à l'air libre avec un ventilateur canalisé, voir pages 1.43 - 1.49.

**Orientations**

8 RD (rotation dans le sens des aiguilles d'une montre côté transmission) et 8 LG. Ventilateur en version boulonnée orientable pour les tailles 400-630, avec un support avant et donc non orientable de la grandeur 710 à transmission, toujours orientable dans les ventilateurs directement accouplés sans support avant. Voir page 2.7.

**Fabrications spéciales**

Voir pages 2.20-2.30.

**Mise en marche du ventilateur**

Le démarrage doit se faire avec un ventilateur partialisé, en fonction de l'absorption maximale du ventilateur.

**Classes de turbines**

Le tableau ci-dessus fait référence aux conditions de travail normales, en conditions de travail pénibles, on préconise de contacter le service clientèle de CORAL pour connaître le type de turbine le plus adapté.

■ **Field of operation**

Low flow rates. High pressures.

**Blade type**

Curve, positive, see pg. 2.3.

**Applications**

For pneumatic transport, dust, drying, pressurization. Suitable for applications in industrial fields like foundries, pasta factories, bakeries, chemicals.

**Standard constructional arrangements**

Arr.1 - Arr.4 - Arr.5 - Arr.8 - Arr.9 - Arr.12, see pgs. 2.5 - 2.6.

**Standard fluid temperatures**

-10 ÷ +60°C. For other temperatures see pgs. 1.12 to 1.15.

**Type of construction**

Fan in Fe360 plate, impeller in Fe360 statically and dynamically balanced. For other materials see pgs. 1.12 to 1.15.

**Operating specifications**

Condition of inlet air T=20°C, 0 m above sea level and ρ=1.205 kg/m<sup>3</sup>.

**Noise level**

Expressed as sound power L<sub>wA</sub> [dB(A)] measured in free field with ducted fan, see pgs. 1.43 to 1.49.

**Orientations**

No.8 RD (clockwise viewed from transmission side) and No.8 LG. Fan in bolted orientable version for sizes 400-630, with front support and so not orientable for sizes 710 and above with transmission drive, always orientable for directly coupled fans without front support. See pg. 2.7.

**Special applications**

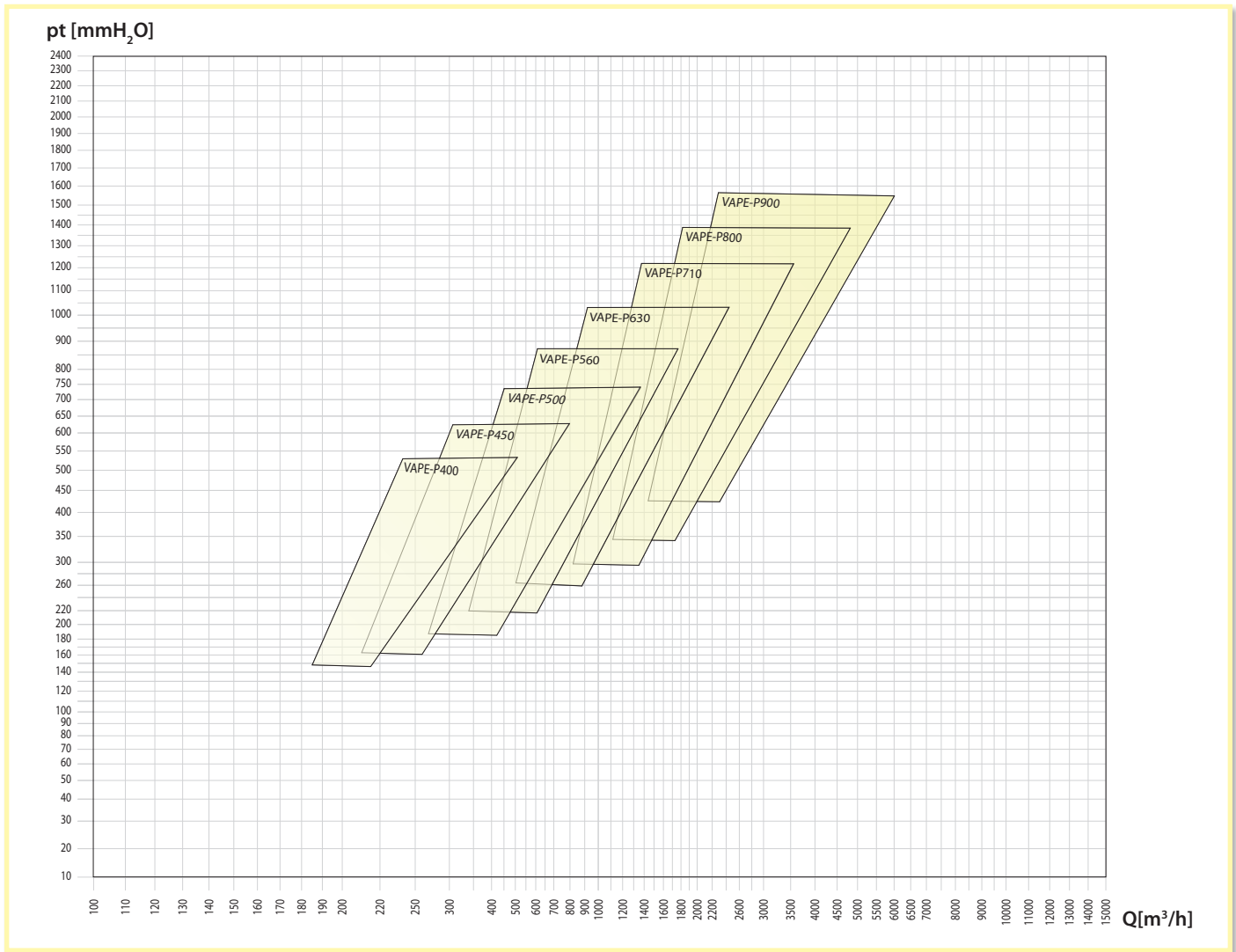
See pgs. 2.20 to 2.30.

**Fan start-up**

During start-up the fan flow rate must be limited, calibrated for the fan's maximum electrical input.

**Impeller classes**

The above table refers to standard operating conditions, in heavy-duty service conditions it is advisable to contact the CORAL Customer Service to establish the most suitable type of impeller.



■ **Arbeitsbereich**

Niedrige Fördermengen. Hohe Drücke.

**Schaufelform**

positive Kurve, siehe Seite 2.3.

**Anwendungen**

Zum Transport von Stäuben, zur Trocknung und für mit Überdruck zu beaufschlagende Räume. Zur Verwendung im industriellen Bereich, Giessereien, Nudelfabriken, Öfen und der Chemie geeignet.

**Konstruktive Standardausführungen**

Ausf. 1-Ausf. 4-Ausf. 5-Ausf. 8-Ausf. 9-Ausf. 12, siehe Seiten 2.5 - 2.6.

**Standardtemperatur des Mediums**

-10 ÷ +60°C. Für andere Temperaturen siehe Seiten 1.12 bis 1.15.

**Konstruktionsart**

Ventilator aus Blech Fe360, Laufrad aus Fe360, statisch und dynamisch ausgewuchtet. Für andere Materialien siehe Seiten 1.12 bis 1.15.

**Betriebsdaten**

Physikalischer Zustand der Ansaugluft T = 20°C, 0 m ü. M. und ρ = 1.205 kg/m³.

**Geräuschpegel**

Angegeben als Schalleistungspegel L<sub>wA</sub> [dB(A)] mit Messung im Freifeld und an Rohren angeschlossenem Ventilatore, siehe Seiten 1.43 bis 1.49.

**Ausrichtung**

8 Modelle RD (Drehrichtung im Uhrzeigersinn, von Antriebsseite aus gesehen) und 8 Modelle LG. Angeschraubter, in der Ausrichtung veränderbarer Ventilator in den Größen 400-630, mit Vorderstütze und damit nicht veränderbar ab Größe 710 mit Riementrieb, immer ausrichtbar bei allen direkt angetriebenen Ventilatoren ohne Vorderstütze, siehe Seite 2.7.

**Spezialausführungen**

Siehe Seiten 2.20 bis 2.30.

**Ventilator-Anlauf**

Der Ventilatoranlauf muss bei teilweise geschlossenem Ventilator erfolgen, in Abhängigkeit von der maximalen Stromaufnahme des Motors.

**Laufradklassen**

Die obestehende Tabelle bezieht sich auf normale Betriebsbedingungen. Bei erschwerenden Betriebsbedingungen wird empfohlen, den Kundenservice von CORAL zu kontaktieren, um den am besten geeigneten Laufradtyp zu bestimmen.

■ **Campo de trabajo**

Caudales bajos. Presiones altas.

**Tipo de pala**

Curva, positiva, ver pág. 2.3.

**Aplicaciones**

Para transporte neumático, polvos, desecación y presurización. Apto para el uso en el campo industrial: fundiciones, fábricas de pasta, hornos e industria química.

**Variantes constructivas estándares**

Ejec. 1-Ejec. 4-Ejec. 5-Ejec. 8-Ejec. 9-Ejec. 12, ver págs. 2.5 - 2.6.

**Temperaturas del fluido estándares**

De -10 a +60°C. Para otras temperaturas, ver págs. de 1.12 a 1.15.

**Tipo de construcción**

Ventilador de chapa en Fe360, rotor en Fe360 equilibrado estática y dinámicamente. Para otros materiales, ver págs. de 1.12 a 1.15.

**Datos de funcionamiento**

Condiciones del aire en aspiración T = 20°C, 0 m SNM y ρ = 1.205 kg/m³.

**Niveles de ruido**

Expresados en potencia sonora L<sub>wA</sub> [dB(A)] medida en campo abierto con ventilador canalizado, ver págs. de 1.43 a 1.49.

**Orientaciones**

8 RD (rotación dextrógira vista desde el lado de transmisión) y 8 LG. Ventilador en versión emperrada orientable para tamaños 400-630, con soporte delantero, por lo cual no es orientable a partir del tamaño 710 de transmisión, siempre orientable en ventiladores acoplados directamente sin soporte delantero. Ver pág. 2.7.

**Construcciones especiales**

Ver págs. de 2.20 a 2.30.

**Puesta en marcha del ventilador**

La puesta en marcha debe efectuarse con ventilador parcializado, en función de la absorción máxima del ventilador.

**Clases de rotores**

La tabla arriba hace referencia a condiciones de trabajo estándares, en condiciones de funcionamiento pesadas, se aconseja llamar al Servicio de atención al cliente de CORAL para conocer el tipo de rotor más adecuado.

VAPE/P

| Tipo<br>• Type • Type • Typ • Tipo                                    |   | P inst.<br>[kW] | n    | LpA<br>[dB(A)] | Tolleranza sulla portata ±5%<br>• Tolérance sur le débit ±5% • Load tolerance ±5%<br>• Durchsatztoleranz ±5% • Tolerancia respecto caudal ±5% |     |     |     |     |     |     |     |     |     |     |     |     |
|---|---|-----------------|------|----------------|---|-----|-----|-----|-----|-----|-----|-----|-----|-----|-----|-----|-----|
| Ventilatore<br>• Ventilateur<br>• Fan<br>• Ventilator<br>• Ventilador | Motore<br>• Moteur<br>• Motor<br>• Motor<br>• Motor |                 |      |                | Q [m³/h]  |     |     |     |     |     |     |     |     |     |     |     |     |
|   |   |                 |      |                | 216   | 252 | 288 | 324 | 360 | 400 | 430 | 470 | 540 | 650 | 720 | 790 | 865 |
|   |   |                 |      |                | pt[mmH <sub>2</sub> O]  |     |     |     |     |     |     |     |     |     |     |     |     |
| VAPE400/P2  | 80  | 0,75            | 2845 | 64             | 304   | 310 | 315 | 320 | 323 | 326 | 327 | 328 | 327 |     |     |     |     |
| VAPE400/P2  | 80  | 1,1             | 2845 | 65             | 304   | 310 | 315 | 320 | 323 | 326 | 327 | 328 | 327 | 317 | 306 | 292 |     |
| VAPE450/P2  | 90  | 1,5             | 2900 | 68             |   |     | 397 | 403 | 408 | 414 | 418 | 422 | 428 | 433 | 433 | 431 | 427 |
| VAPE450/P2  | 90  | 2,2             | 2920 | 69             |   |     | 401 | 407 | 412 | 418 | 422 | 426 | 432 | 437 | 437 | 435 | 431 |
| VAPE500/P2R   | 90  | 2,2             | 2920 | 70             |   |     |     |     | 443 | 449 | 453 | 458 | 465 | 473 | 476 | 477 | 476 |
| VAPE500/P2R   | 100   | 3               | 2920 | 71             |   |     |     |     | 443 | 449 | 453 | 458 | 465 | 473 | 476 | 477 | 476 |
| VAPE500/P2  | 100   | 3               | 2920 | 71             |   |     |     |     |     | 495 | 500 | 506 | 515 | 527 | 532 | 536 | 540 |
| VAPE500/P2  | 112   | 4               | 2950 | 72             |   |     |     |     |     | 505 | 510 | 516 | 525 | 537 | 542 | 546 | 550 |
| VAPE560/P2R   | 112   | 4               | 2950 | 73             |   |     |     |     |     |     |     | 567 | 577 | 590 | 598 | 604 | 610 |
| VAPE560/P2R   | 132   | 5,5             | 2950 | 74             |   |     |     |     |     |     |     | 567 | 577 | 590 | 598 | 604 | 610 |
| VAPE560/P2  | 132   | 5,5             | 2950 | 75             |   |     |     |     |     |     |     |     |     | 646 | 654 | 662 | 669 |
| VAPE560/P2  | 132   | 7,5             | 2950 | 76             |   |     |     |     |     |     |     |     |     | 646 | 654 | 662 | 669 |
| VAPE630/P2R   | 132   | 5,5             | 2950 | 75             |   |     |     |     |     |     |     |     |     |     |     | 720 | 729 |
| VAPE630/P2R   | 132   | 7,5             | 2950 | 76             |   |     |     |     |     |     |     |     |     |     |     | 720 | 729 |
| VAPE630/P2  | 132   | 7,5             | 2950 | 75             |   |     |     |     |     |     |     |     |     |     |     |     |     |
| VAPE630/P2  | 160   | 11              | 2950 | 77             |   |     |     |     |     |     |     |     |     |     |     |     |     |
| VAPE710/P2R   | 160   | 11              | 2950 | 77             |   |     |     |     |     |     |     |     |     |     |     |     |     |
| VAPE710/P2R   | 160   | 15              | 2950 | 78             |   |     |     |     |     |     |     |     |     |     |     |     |     |
| VAPE710/P2  | 160   | 15              | 2950 | 79             |   |     |     |     |     |     |     |     |     |     |     |     |     |
| VAPE710/P2  | 160   | 18,5            | 2960 | 81             |   |     |     |     |     |     |     |     |     |     |     |     |     |
| VAPE710/P2  | 180   | 22              | 2960 | 81             |   |     |     |     |     |     |     |     |     |     |     |     |     |
| VAPE800/P2R   | 180   | 22              | 2960 | 80             |   |     |     |     |     |     |     |     |     |     |     |     |     |
| VAPE800/P2R   | 200   | 30              | 2960 | 81             |   |     |     |     |     |     |     |     |     |     |     |     |     |
| VAPE800/P2  | 200   | 30              | 2960 | 81             |   |     |     |     |     |     |     |     |     |     |     |     |     |
| VAPE800/P2  | 200   | 37              | 2960 | 84             |   |     |     |     |     |     |     |     |     |     |     |     |     |
| VAPE900/P2R   | 200   | 37              | 2960 | 81             |   |     |     |     |     |     |     |     |     |     |     |     |     |
| VAPE900/P2R   | 225   | 45              | 2960 | 85             |   |     |     |     |     |     |     |     |     |     |     |     |     |
| VAPE900/P2R   | 250   | 55              | 2960 | 85             |   |     |     |     |     |     |     |     |     |     |     |     |     |
| VAPE900/P2  | 250   | 55              | 2960 | 87             |   |     |     |     |     |     |     |     |     |     |     |     |     |
| VAPE900/P2  | 280   | 75              | 2970 | 87             |   |     |     |     |     |     |     |     |     |     |     |     |     |

Il livello di pressione sonora ponderato A, LpA (cap.14), corrisponde al valore rilevato, nelle condizioni di prova, nel punto di massima rumorosità.

**VAPE/P**

**Tolleranza sulla rumorosità ±4dB(A)**  
 • Tolérance sur le bruit ±4dB(A) • Noise tolerance ±4dB(A)  
 • Geräushtoleranz ±4dB(A) • Tolerancia respecto a ruido ±4dB(A)

| Q [m³/h]               |      |      |      |      |      |      |      |      |      |      |      |      |      |      |      |      |      |      |      |
|------------------------|------|------|------|------|------|------|------|------|------|------|------|------|------|------|------|------|------|------|------|
| 935                    | 1080 | 1225 | 1370 | 1440 | 1620 | 1800 | 2160 | 2520 | 2880 | 3240 | 3600 | 3960 | 4320 | 4680 | 5400 | 6120 | 7200 | 8280 | 9400 |
| pt[mmH <sub>2</sub> O] |      |      |      |      |      |      |      |      |      |      |      |      |      |      |      |      |      |      |      |
|                        |      |      |      |      |      |      |      |      |      |      |      |      |      |      |      |      |      |      |      |
| 420                    |      |      |      |      |      |      |      |      |      |      |      |      |      |      |      |      |      |      |      |
| 424                    | 403  |      |      |      |      |      |      |      |      |      |      |      |      |      |      |      |      |      |      |
| 473                    | 461  |      |      |      |      |      |      |      |      |      |      |      |      |      |      |      |      |      |      |
| 473                    | 461  | 441  | 412  |      |      |      |      |      |      |      |      |      |      |      |      |      |      |      |      |
| 541                    | 539  | 531  | 516  | 506  |      |      |      |      |      |      |      |      |      |      |      |      |      |      |      |
| 551                    | 549  | 541  | 526  | 516  | 486  |      |      |      |      |      |      |      |      |      |      |      |      |      |      |
| 614                    | 619  | 619  | 614  | 609  | 593  |      |      |      |      |      |      |      |      |      |      |      |      |      |      |
| 614                    | 619  | 619  | 614  | 609  | 593  | 569  |      |      |      |      |      |      |      |      |      |      |      |      |      |
| 675                    | 684  | 690  | 691  | 691  | 685  | 673  |      |      |      |      |      |      |      |      |      |      |      |      |      |
| 675                    | 684  | 690  | 691  | 691  | 685  | 673  | 629  |      |      |      |      |      |      |      |      |      |      |      |      |
| 736                    | 748  | 757  | 764  | 766  | 767  | 764  |      |      |      |      |      |      |      |      |      |      |      |      |      |
| 736                    | 748  | 757  | 764  | 766  | 767  | 764  | 742  | 699  |      |      |      |      |      |      |      |      |      |      |      |
| 818                    | 833  | 846  | 857  | 861  | 869  | 874  | 872  |      |      |      |      |      |      |      |      |      |      |      |      |
| 818                    | 833  | 846  | 857  | 861  | 869  | 874  | 872  | 854  | 821  | 772  |      |      |      |      |      |      |      |      |      |
|                        | 921  | 936  | 949  | 954  | 967  | 977  | 988  | 988  | 975  |      |      |      |      |      |      |      |      |      |      |
|                        | 921  | 936  | 949  | 954  | 967  | 977  | 988  | 988  | 975  | 950  | 913  | 862  |      |      |      |      |      |      |      |
|                        |      |      |      | 1043 | 1065 | 1079 | 1099 | 1110 | 1112 | 1104 | 1087 |      |      |      |      |      |      |      |      |
|                        |      |      |      | 1049 | 1071 | 1085 | 1105 | 1116 | 1118 | 1110 | 1093 | 1066 | 1030 |      |      |      |      |      |      |
|                        |      |      |      | 1049 | 1071 | 1085 | 1105 | 1116 | 1118 | 1110 | 1093 | 1066 | 1030 | 983  |      |      |      |      |      |
|                        |      |      |      |      |      |      |      | 1240 | 1260 | 1273 | 1282 | 1278 | 1274 | 1257 | 1239 |      |      |      |      |
|                        |      |      |      |      |      |      |      | 1240 | 1260 | 1273 | 1282 | 1278 | 1274 | 1257 | 1239 | 1162 |      |      |      |
|                        |      |      |      |      |      |      |      | 1349 | 1374 | 1394 | 1408 | 1417 | 1420 | 1418 | 1409 | 1373 |      |      |      |
|                        |      |      |      |      |      |      |      | 1349 | 1374 | 1394 | 1408 | 1417 | 1420 | 1418 | 1409 | 1373 | 1314 | 1176 |      |
|                        |      |      |      |      |      |      |      |      | 1517 | 1542 | 1563 | 1580 | 1592 | 1600 | 1603 | 1596 | 1570 |      |      |
|                        |      |      |      |      |      |      |      |      | 1517 | 1542 | 1563 | 1580 | 1592 | 1600 | 1603 | 1596 | 1570 | 1496 |      |
|                        |      |      |      |      |      |      |      |      | 1517 | 1542 | 1563 | 1580 | 1592 | 1600 | 1603 | 1596 | 1570 | 1496 | 1377 |
|                        |      |      |      |      |      |      |      |      | 1692 | 1718 | 1740 | 1758 | 1773 | 1785 | 1797 | 1794 | 1763 | 1698 |      |
|                        |      |      |      |      |      |      |      |      | 1698 | 1724 | 1746 | 1764 | 1779 | 1791 | 1803 | 1800 | 1769 | 1704 | 1600 |

■ Le niveau de pression sonore pondérée A, LpA (chap. 14), correspond à la valeur relevée dans les conditions d'essai au point de niveau sonore maximum.

■ The A-weighted sound power level, LpA (Chap.14), is the value measured in test conditions at the point of maximum noise level.

■ Der nach A bewertete Schalldruckpegel LpA (Kap. 14) entspricht in den Testbedingungen dem höchsten gemessenen Wert des Geräuschpegels.

■ El nivel de presión sonora ponderado A, LpA (cap. 14), corresponde al valor medido, en las condiciones de prueba, en el punto con máximos niveles de ruido.

VAPE/P

| Tipo<br>• Type • Type • Typ • Tipo                                    |   | P inst.<br>[kW] | n    | LpA<br>[dB(A)] | Tolleranza sulla portata ±5%<br>• Tolérance sur le débit ±5% • Load tolerance ±5%<br>• Durchsatztoleranz ±5% • Tolerancia respecto caudal ±5% |     |     |     |     |     |     |     |     |     |     |     |     |
|---|---|-----------------|------|----------------|---|-----|-----|-----|-----|-----|-----|-----|-----|-----|-----|-----|-----|
| Ventilatore<br>• Ventilateur<br>• Fan<br>• Ventilator<br>• Ventilador | Motore<br>• Moteur<br>• Motor<br>• Motor<br>• Motor |                 |      |                | Q [m³/h]  |     |     |     |     |     |     |     |     |     |     |     |     |
|   |   |                 |      |                | 216   | 252 | 288 | 324 | 360 | 400 | 430 | 470 | 540 | 650 | 720 | 790 | 865 |
|   |   |                 |      |                | pt[mmH <sub>2</sub> O]  |     |     |     |     |     |     |     |     |     |     |     |     |
| VAPE400/P2  | 80  | 0,75            | 2845 | 64             | 293   | 298 | 301 | 305 | 306 | 307 | 307 | 306 | 301 |     |     |     |     |
| VAPE400/P2  | 80  | 1,1             | 2845 | 65             | 293   | 298 | 301 | 305 | 306 | 307 | 307 | 306 | 301 | 285 | 269 | 250 |     |
| VAPE450/P2  | 90  | 1,5             | 2900 | 68             |   |     | 379 | 384 | 388 | 393 | 395 | 398 | 401 | 401 | 398 | 392 | 384 |
| VAPE450/P2  | 90  | 2,2             | 2920 | 69             |   |     | 383 | 388 | 392 | 396 | 399 | 402 | 405 | 405 | 401 | 396 | 388 |
| VAPE500/P2R   | 90  | 2,2             | 2920 | 70             |   |     |     |     | 422 | 427 | 430 | 434 | 439 | 443 | 444 | 442 | 439 |
| VAPE500/P2R   | 100   | 3               | 2920 | 71             |   |     |     |     | 422 | 427 | 430 | 434 | 439 | 443 | 444 | 442 | 439 |
| VAPE500/P2  | 100   | 3               | 2920 | 71             |   |     |     |     |     | 469 | 473 | 478 | 484 | 492 | 495 | 496 | 497 |
| VAPE500/P2  | 112   | 4               | 2950 | 72             |   |     |     |     |     | 478 | 482 | 487 | 493 | 501 | 504 | 505 | 506 |
| VAPE560/P2R   | 112   | 4               | 2950 | 73             |   |     |     |     |     |     |     | 534 | 542 | 552 | 558 | 562 | 566 |
| VAPE560/P2R   | 132   | 5,5             | 2950 | 74             |   |     |     |     |     |     |     | 534 | 542 | 552 | 558 | 562 | 566 |
| VAPE560/P2  | 132   | 5,5             | 2950 | 75             |   |     |     |     |     |     |     |     |     | 602 | 608 | 614 | 618 |
| VAPE560/P2  | 132   | 7,5             | 2950 | 76             |   |     |     |     |     |     |     |     |     | 602 | 608 | 614 | 618 |
| VAPE630/P2R   | 132   | 5,5             | 2950 | 75             |   |     |     |     |     |     |     |     |     |     |     | 668 | 675 |
| VAPE630/P2R   | 132   | 7,5             | 2950 | 76             |   |     |     |     |     |     |     |     |     |     |     | 668 | 675 |
| VAPE630/P2  | 132   | 7,5             | 2950 | 75             |   |     |     |     |     |     |     |     |     |     |     |     |     |
| VAPE630/P2  | 160   | 11              | 2950 | 77             |   |     |     |     |     |     |     |     |     |     |     |     |     |
| VAPE710/P2R   | 160   | 11              | 2950 | 77             |   |     |     |     |     |     |     |     |     |     |     |     |     |
| VAPE710/P2R   | 160   | 15              | 2950 | 78             |   |     |     |     |     |     |     |     |     |     |     |     |     |
| VAPE710/P2  | 160   | 15              | 2950 | 79             |   |     |     |     |     |     |     |     |     |     |     |     |     |
| VAPE710/P2  | 160   | 18,5            | 2960 | 81             |   |     |     |     |     |     |     |     |     |     |     |     |     |
| VAPE710/P2  | 180   | 22              | 2960 | 81             |   |     |     |     |     |     |     |     |     |     |     |     |     |
| VAPE800/P2R   | 180   | 22              | 2960 | 80             |   |     |     |     |     |     |     |     |     |     |     |     |     |
| VAPE800/P2R   | 200   | 30              | 2960 | 81             |   |     |     |     |     |     |     |     |     |     |     |     |     |
| VAPE800/P2  | 200   | 30              | 2960 | 81             |   |     |     |     |     |     |     |     |     |     |     |     |     |
| VAPE800/P2  | 200   | 37              | 2960 | 84             |   |     |     |     |     |     |     |     |     |     |     |     |     |
| VAPE900/P2R   | 200   | 37              | 2960 | 81             |   |     |     |     |     |     |     |     |     |     |     |     |     |
| VAPE900/P2R   | 225   | 45              | 2960 | 85             |   |     |     |     |     |     |     |     |     |     |     |     |     |
| VAPE900/P2R   | 250   | 55              | 2960 | 85             |   |     |     |     |     |     |     |     |     |     |     |     |     |
| VAPE900/P2  | 250   | 55              | 2960 | 87             |   |     |     |     |     |     |     |     |     |     |     |     |     |
| VAPE900/P2  | 280   | 75              | 2970 | 87             |   |     |     |     |     |     |     |     |     |     |     |     |     |

Il livello di pressione sonora ponderato A, LpA (cap.14), corrisponde al valore rilevato, nelle condizioni di prova, nel punto di massima rumorosità.

**Tolleranza sulla rumorosità ±4dB(A)**  
 • Tolérance sur le bruit ±4dB(A) • Noise tolerance ±4dB(A)  
 • Geräushtoleranz ±4dB(A) • Tolerancia respecto a ruido ±4dB(A)

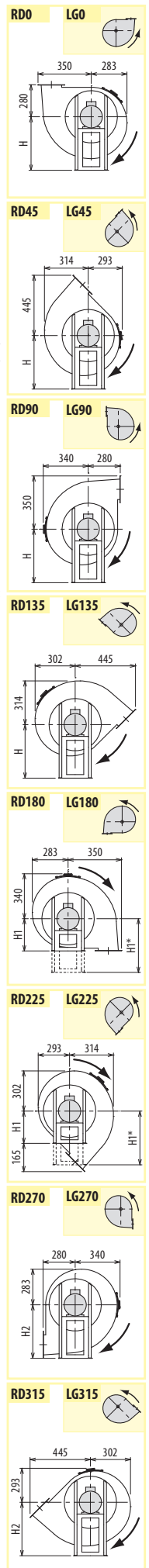
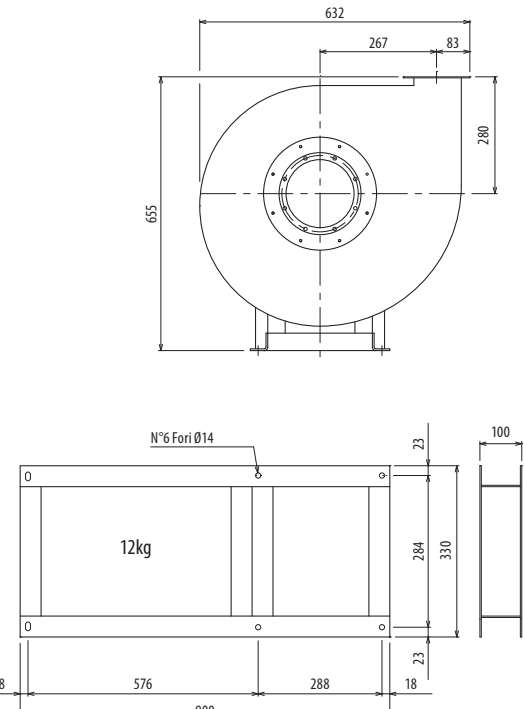
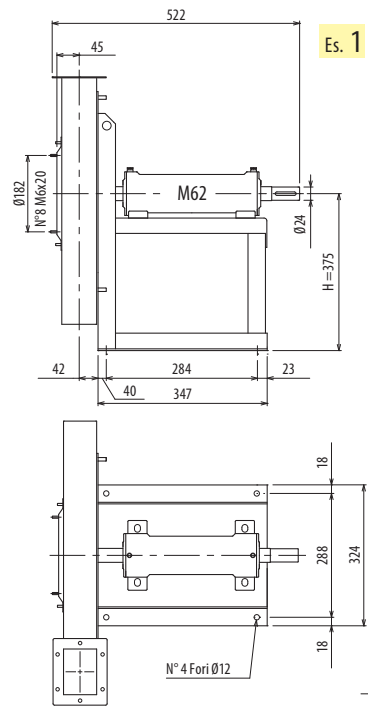
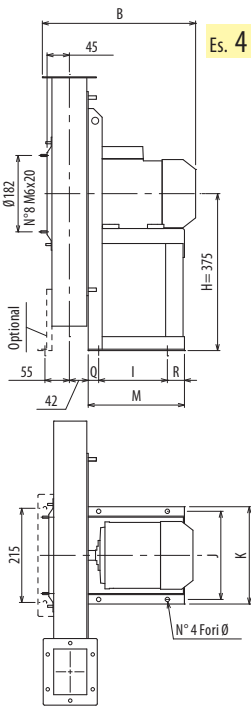
| Q [m³/h]               |      |      |      |      |      |      |      |      |      |      |      |      |      |      |      |      |      |      |      |
|------------------------|------|------|------|------|------|------|------|------|------|------|------|------|------|------|------|------|------|------|------|
| 935                    | 1080 | 1225 | 1370 | 1440 | 1620 | 1800 | 2160 | 2520 | 2880 | 3240 | 3600 | 3960 | 4320 | 4680 | 5400 | 6120 | 7200 | 8280 | 9400 |
| pt[mmH <sub>2</sub> O] |      |      |      |      |      |      |      |      |      |      |      |      |      |      |      |      |      |      |      |
| 373                    |      |      |      |      |      |      |      |      |      |      |      |      |      |      |      |      |      |      |      |
| 377                    | 347  |      |      |      |      |      |      |      |      |      |      |      |      |      |      |      |      |      |      |
| 433                    | 416  |      |      |      |      |      |      |      |      |      |      |      |      |      |      |      |      |      |      |
| 433                    | 416  | 390  | 354  |      |      |      |      |      |      |      |      |      |      |      |      |      |      |      |      |
| 495                    | 487  | 473  | 451  | 437  |      |      |      |      |      |      |      |      |      |      |      |      |      |      |      |
| 504                    | 496  | 482  | 460  | 446  | 407  |      |      |      |      |      |      |      |      |      |      |      |      |      |      |
| 567                    | 568  | 563  | 553  | 546  | 524  |      |      |      |      |      |      |      |      |      |      |      |      |      |      |
| 567                    | 568  | 563  | 553  | 546  | 524  | 494  |      |      |      |      |      |      |      |      |      |      |      |      |      |
| 622                    | 626  | 626  | 622  | 619  | 606  | 587  |      |      |      |      |      |      |      |      |      |      |      |      |      |
| 622                    | 626  | 626  | 622  | 619  | 606  | 587  | 528  |      |      |      |      |      |      |      |      |      |      |      |      |
| 680                    | 688  | 693  | 696  | 696  | 692  | 685  |      |      |      |      |      |      |      |      |      |      |      |      |      |
| 680                    | 688  | 693  | 696  | 696  | 692  | 685  | 654  | 601  |      |      |      |      |      |      |      |      |      |      |      |
| 751                    | 761  | 770  | 776  | 778  | 781  | 780  | 767  |      |      |      |      |      |      |      |      |      |      |      |      |
| 751                    | 761  | 770  | 776  | 778  | 781  | 780  | 767  | 737  | 693  | 631  |      |      |      |      |      |      |      |      |      |
|                        |      | 851  | 860  | 863  | 871  | 876  | 878  | 870  | 849  |      |      |      |      |      |      |      |      |      |      |
|                        |      | 851  | 860  | 863  | 871  | 876  | 878  | 870  | 849  | 817  | 772  | 714  |      |      |      |      |      |      |      |
|                        |      |      |      | 937  | 953  | 961  | 971  | 971  | 963  | 946  | 920  |      |      |      |      |      |      |      |      |
|                        |      |      |      | 942  | 958  | 966  | 976  | 976  | 968  | 951  | 925  | 888  | 843  |      |      |      |      |      |      |
|                        |      |      |      | 942  | 958  | 966  | 976  | 976  | 968  | 951  | 925  | 888  | 843  | 786  |      |      |      |      |      |
|                        |      |      |      |      |      |      |      | 1094 | 1105 | 1109 | 1110 | 1100 | 1088 | 1066 | 1042 |      |      |      |      |
|                        |      |      |      |      |      |      |      | 1094 | 1105 | 1109 | 1110 | 1100 | 1088 | 1066 | 1042 | 956  |      |      |      |
|                        |      |      |      |      |      |      |      | 1180 | 1195 | 1205 | 1210 | 1210 | 1204 | 1194 | 1178 | 1128 |      |      |      |
|                        |      |      |      |      |      |      |      | 1180 | 1195 | 1205 | 1210 | 1210 | 1204 | 1194 | 1178 | 1128 | 1056 | 898  |      |
|                        |      |      |      |      |      |      |      |      | 1312 | 1327 | 1339 | 1348 | 1352 | 1353 | 1350 | 1332 | 1297 |      |      |
|                        |      |      |      |      |      |      |      |      | 1312 | 1327 | 1339 | 1348 | 1352 | 1353 | 1350 | 1332 | 1297 | 1214 |      |
|                        |      |      |      |      |      |      |      |      | 1312 | 1327 | 1339 | 1348 | 1352 | 1353 | 1350 | 1332 | 1297 | 1214 | 1088 |
|                        |      |      |      |      |      |      |      |      | 1440 | 1456 | 1468 | 1476 | 1482 | 1486 | 1483 | 1466 | 1419 | 1341 |      |
|                        |      |      |      |      |      |      |      |      | 1444 | 1460 | 1472 | 1481 | 1487 | 1490 | 1487 | 1471 | 1423 | 1345 | 1229 |

■ Le niveau de pression sonore pondérée A, LpA (chap. 14), correspond à la valeur relevée dans les conditions d'essai au point de niveau sonore maximum.

■ The A-weighted sound power level, LpA (Chap.14), is the value measured in test conditions at the point of maximum noise level.

■ Der nach A bewertete Schalldruckpegel LpA (Kap. 14) entspricht in den Testbedingungen dem höchsten gemessenen Wert des Geräuschpegels.

■ El nivel de presión sonora ponderado A, LpA (cap. 14), corresponde al valor medido, en las condiciones de prueba, en el punto con máximos niveles de ruido.



Il ventilatore è orientabile • Peso in tabella comprensivo di motore

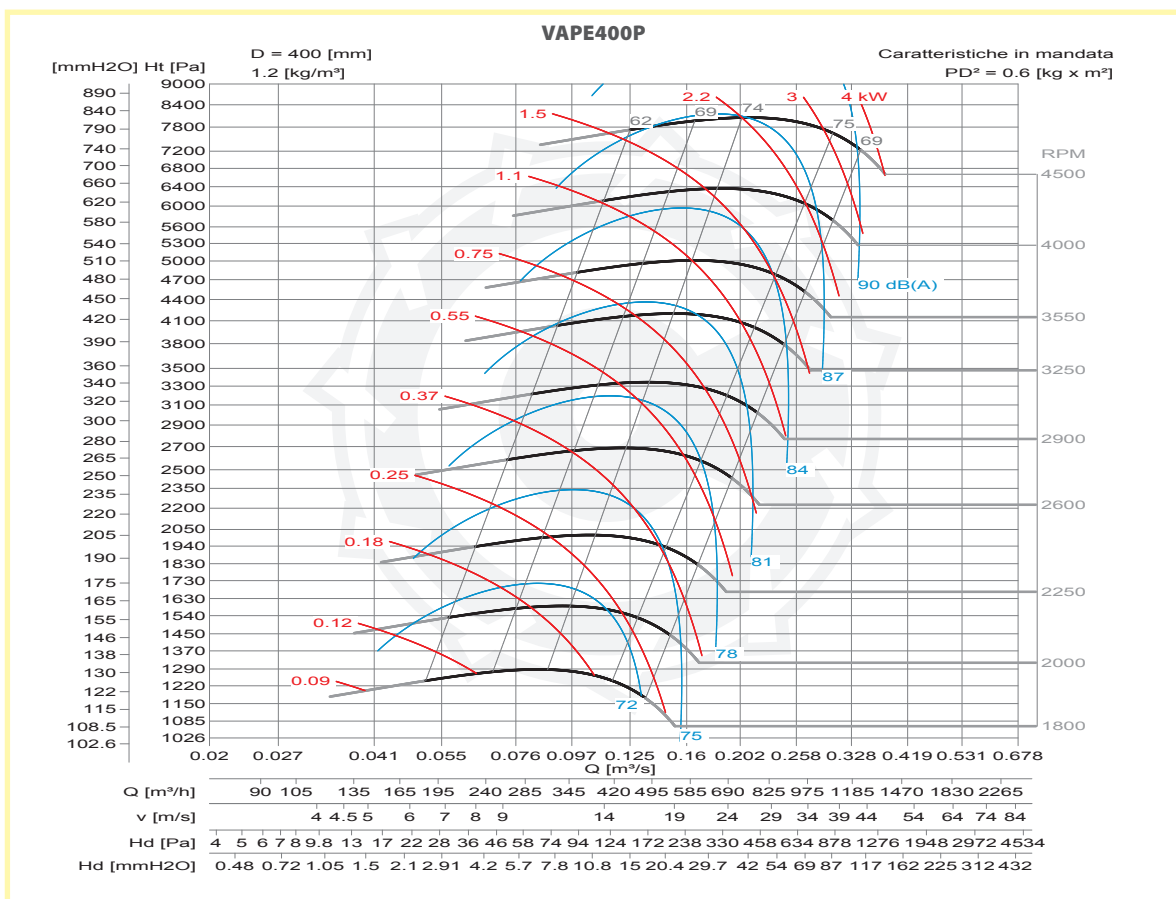
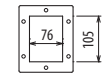
- Le ventilateur est orientable
  - The fan is revolvable
  - Der Ventilator ist drehbar
  - El ventilador es orientable
- Le poids dans le tableau inclut le moteur    The weight indicated in the table includes motor    Gewichtsangabe in Tabelle inkl. Motor    El peso en la tabla incluye el motor

Ulteriori informazioni e quote:  
 ■ Ulérieures informations et cotes:  
 ■ Further information and sizes:  
 ■ Weitere Infos und Größen:  
 ■ Más informaciones y medidas:

| TIPO - Type     |              | PESO Weight | PD <sup>2</sup>      | B   | I   | H   | H1   | H2  | J   | K   | M   | Q  | R  | Ø  |
|-----------------|--------------|-------------|----------------------|-----|-----|-----|------|-----|-----|-----|-----|----|----|----|
| VENTILATORE Fan | MOTORE Motor | Kg          | Kgf x m <sup>2</sup> |     |     |     |      |     |     |     |     |    |    |    |
| VAPE400/P2      | 80 A2        | 49          | 0,5                  | 344 | 121 | 375 | 375* | 375 | 203 | 225 | 211 | 45 | 45 | 10 |
| VAPE400/P2      | 80 B2        | 49          | 0,5                  | 344 | 121 | 375 | 375* | 375 | 203 | 225 | 211 | 45 | 45 | 10 |
| VAPE400/P/T     |              | 40          | 0,50                 |     |     | 375 | 280  | 375 |     |     |     |    |    |    |

pg. / s. 4,6

pg. / s. 4,5



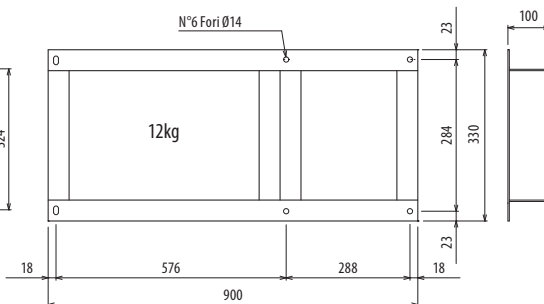
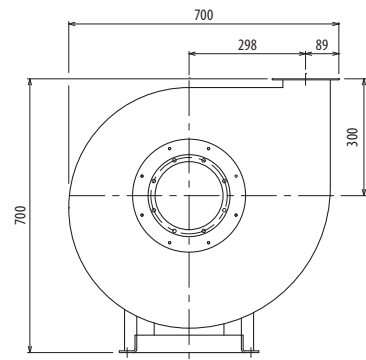
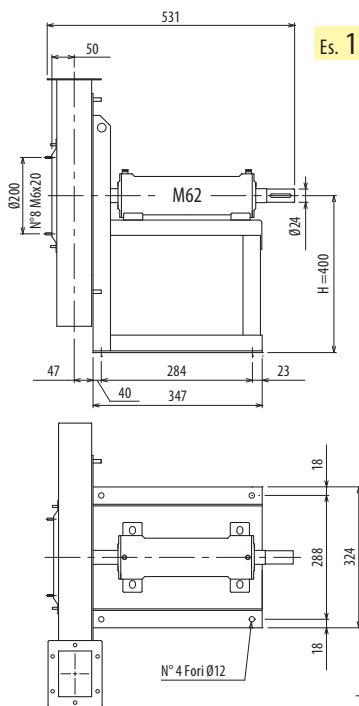
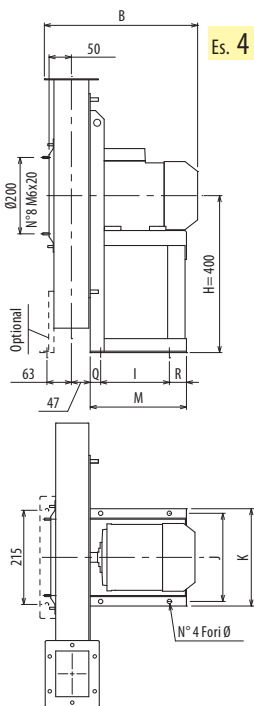
VAPE/P



# DIMENSIONI D'INGOMBRO E PESI/CURVE DI FUNZIONAMENTO

■ DIMENSIONS D'ENCOMBREMENT ET POIDS/COURBES DE FONCTIONNEMENT ■ OVERALL DIMENSIONS AND WEIGHT/WORKING CURVES  
 ■ AUSMARE UND GEWICHTE/FUNKTIONSKURVEN ■ DIMENSIONES QUE OCUPA Y PESOS/CURVAS DE FUNCIONAMIENTO

# VAPE450/P



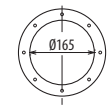
Il ventilatore è orientabile • Peso in tabella comprensivo di motore

- Le ventilateur est orientable
  - The fan is revolvable
  - Der Ventilator ist drehbar
  - El ventilador es orientable
- Le poids dans le tableau inclut le moteur    The weight indicated in the table includes motor    Gewichtsgabe in Tabelle inkl. Motor    El peso en la tabla incluye el motor

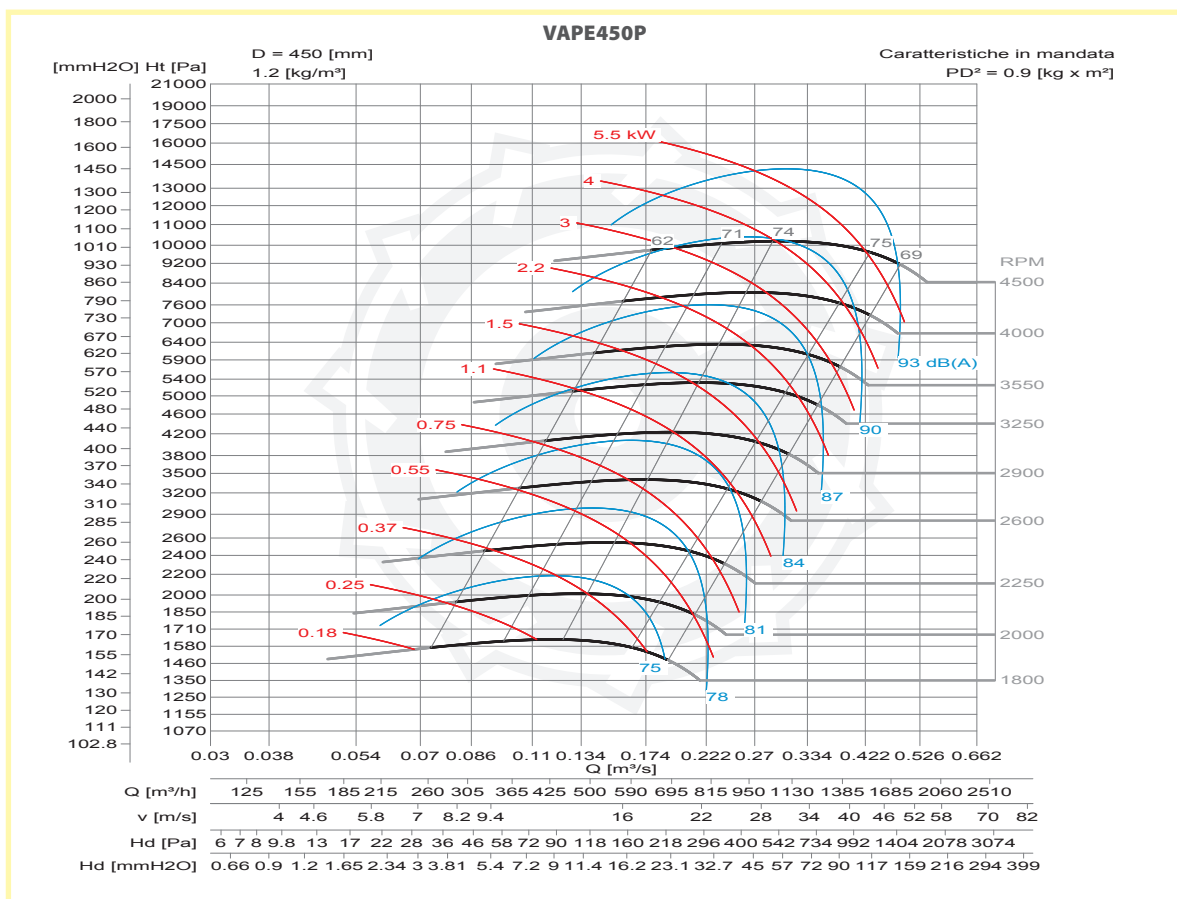
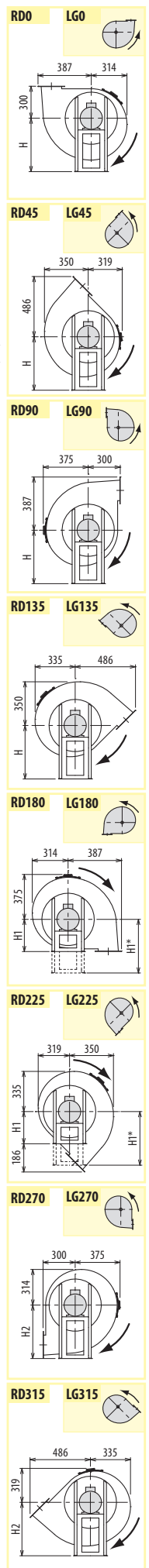
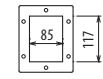
Ulteriori informazioni e quote:  
 ■ Ulérieures informations et cotes:  
 ■ Further information and sizes:  
 ■ Weitere Infos und Größen:  
 ■ Más informaciones y medidas:

| TIPO - Type     |              | PESO Weight | PD <sup>2</sup>      | B   | I   | H   | H1   | H2  | J   | K   | M   | Q  | R  | Ø  |
|-----------------|--------------|-------------|----------------------|-----|-----|-----|------|-----|-----|-----|-----|----|----|----|
| VENTILATORE Fan | MOTORE Motor | Kg          | Kgf x m <sup>2</sup> |     |     |     |      |     |     |     |     |    |    |    |
| VAPE450/P2      | 90 S2        | 58          | 0,9                  | 400 | 133 | 400 | 400* | 400 | 234 | 260 | 246 | 55 | 58 | 10 |
| VAPE450/P2      | 90 L2        | 61          | 0,9                  | 400 | 133 | 400 | 400* | 400 | 234 | 260 | 246 | 55 | 58 | 10 |
| VAPE450/P/T     |              | 65          | 0,9                  |     |     | 400 | 300  | 400 |     |     |     |    |    |    |

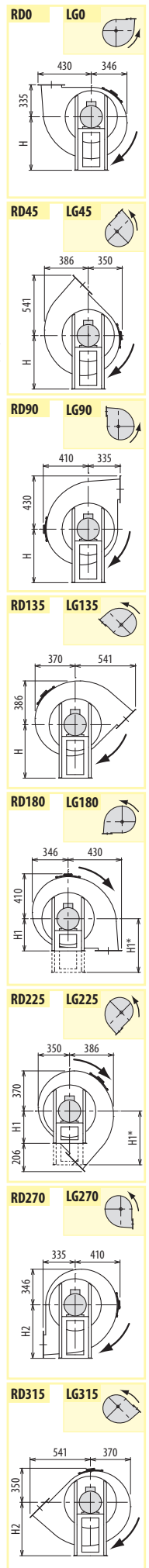
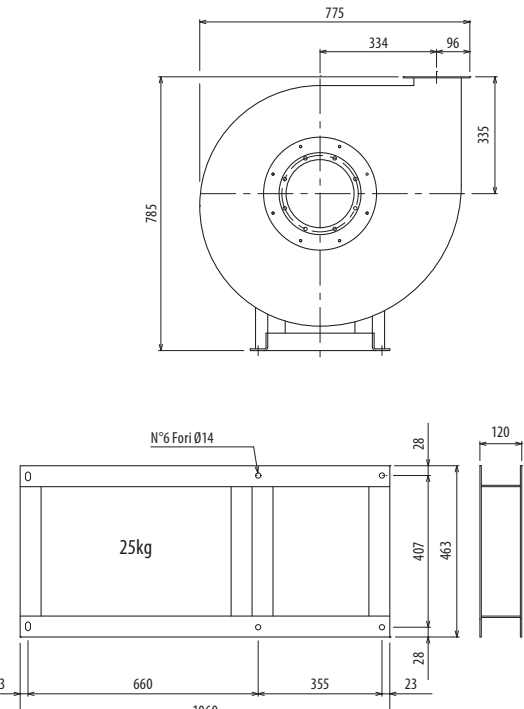
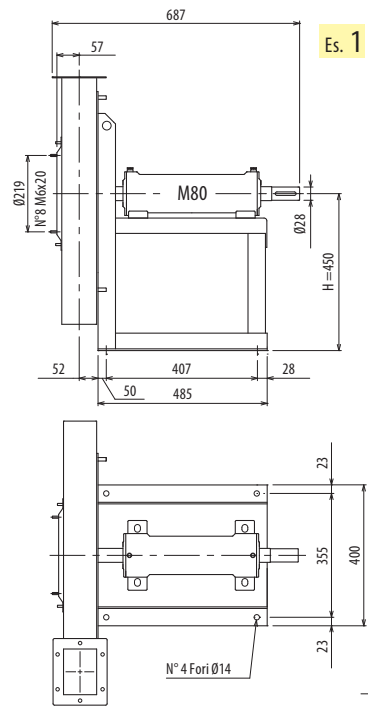
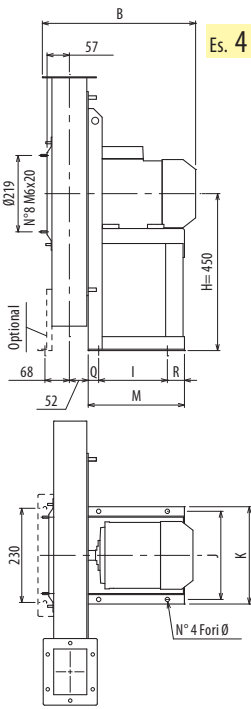
pg. / s. 4,6



pg. / s. 4,5



VAPE/P



Il ventilatore è orientabile • Peso in tabella comprensivo di motore

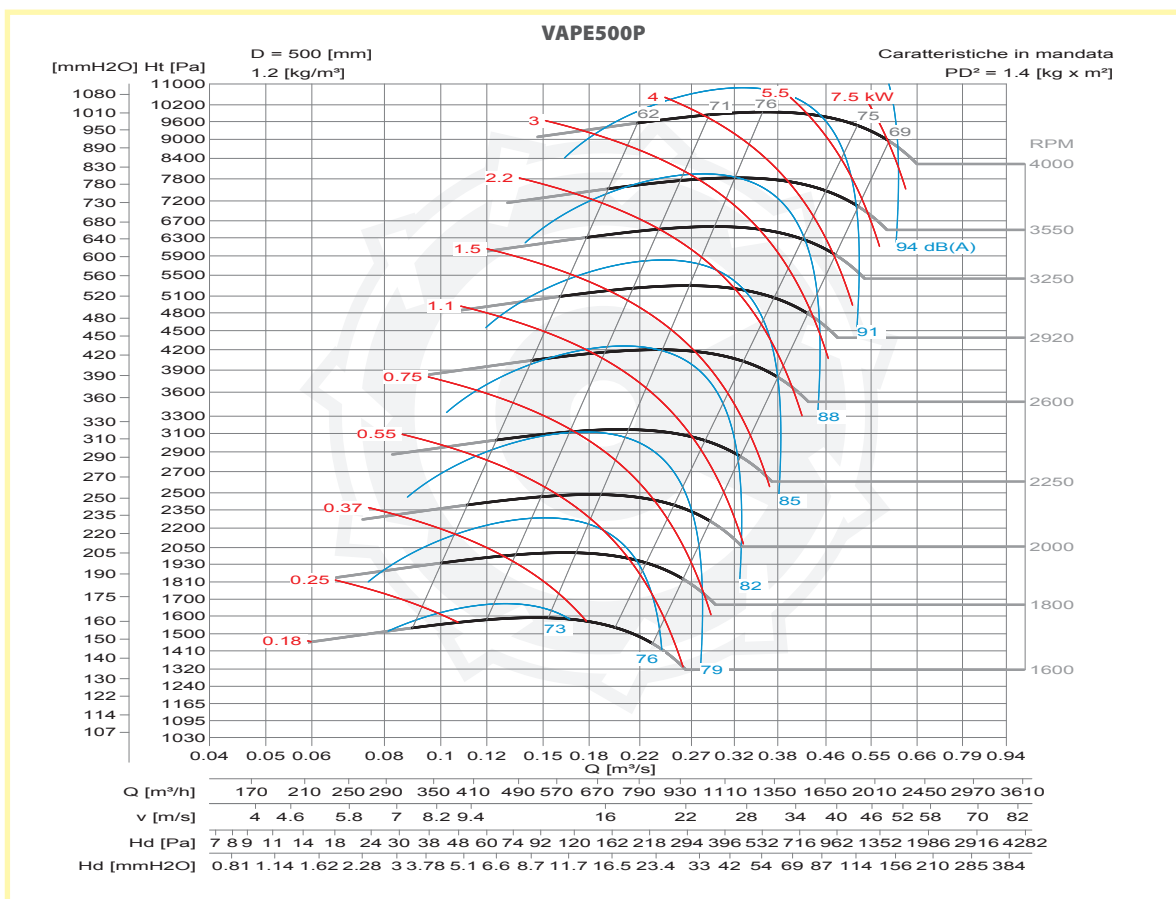
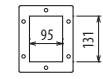
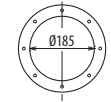
- Le ventilateur est orientable
  - The fan is revolvable
  - Der Ventilator ist drehbar
  - El ventilador es orientable
- Le poids dans le tableau inclut le moteur    The weight indicated in the table includes motor    Gewichtsangabe in Tabelle inkl. Motor    El peso en la tabla incluye el motor

Ulteriori informazioni e quote:  
■ Ultrieures informations et cotes:  
■ Further information and sizes:  
■ Weitere Infos und Größen:  
■ Más informaciones y medidas:

| TIPO - Type     |              | PESO Weight | PD <sup>2</sup>      | B   | I   | H   | H1   | H2  | J   | K   | M   | Q  | R  | Ø  |
|-----------------|--------------|-------------|----------------------|-----|-----|-----|------|-----|-----|-----|-----|----|----|----|
| VENTILATORE Fan | MOTORE Motor | Kg          | Kgf x m <sup>2</sup> |     |     |     |      |     |     |     |     |    |    |    |
| VAPE500/P2R     | 90 L2        | 65          | 1,2                  | 410 | 133 | 450 | 450* | 450 | 234 | 260 | 246 | 55 | 58 | 10 |
| VAPE500/P2R     | 100 L2       | 74          | 1,2                  | 441 | 197 | 450 | 450* | 450 | 289 | 324 | 276 | 30 | 49 | 12 |
| VAPE500/P2      | 100 L2       | 77          | 1,4                  | 441 | 197 | 450 | 450* | 450 | 289 | 324 | 276 | 30 | 49 | 12 |
| VAPE500/P2      | 112 M2       | 85          | 1,4                  | 462 | 197 | 450 | 450* | 450 | 289 | 324 | 276 | 30 | 49 | 12 |
| VAPE500/P/T     |              | 80          | 1,4                  |     |     | 450 | 335  | 450 |     |     |     |    |    |    |

pg. / s. 4,6

pg. / s. 4,5

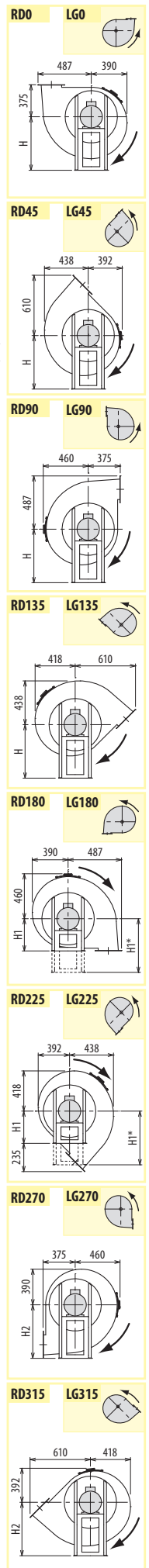
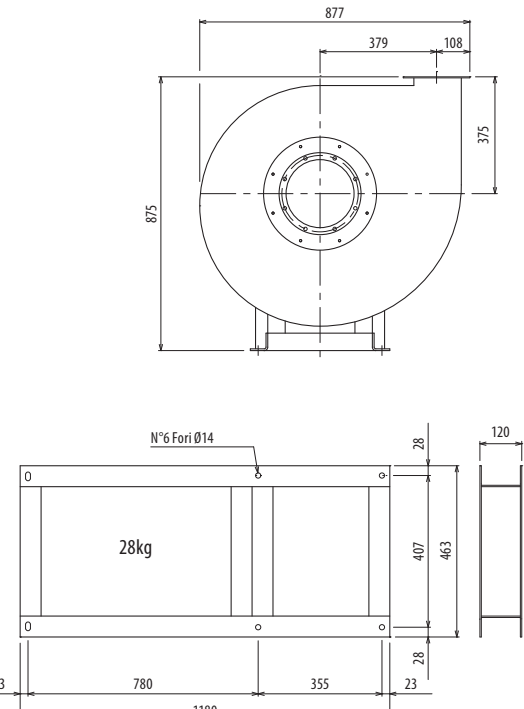
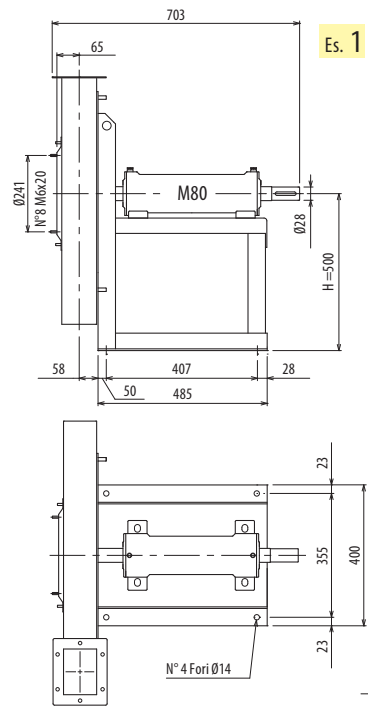
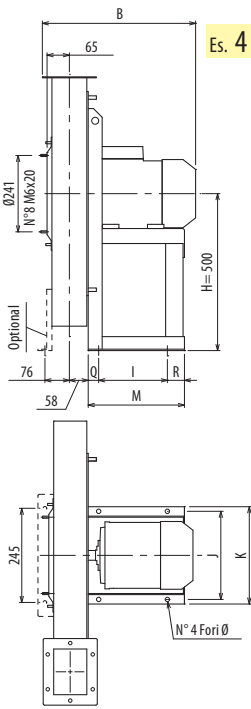


VAPE/P

# DIMENSIONI D'INGOMBRO E PESI/CURVE DI FUNZIONAMENTO

■ DIMENSIONS D'ENCOMBREMENT ET POIDS/COURBES DE FONCTIONNEMENT ■ OVERALL DIMENSIONS AND WEIGHT/WORKING CURVES  
 ■ AUSMARE UND GEWICHTE/FUNKTIONSKURVEN ■ DIMENSIONES QUE OCUPA Y PESOS/CURVAS DE FUNCIONAMIENTO

# VAPE560/P



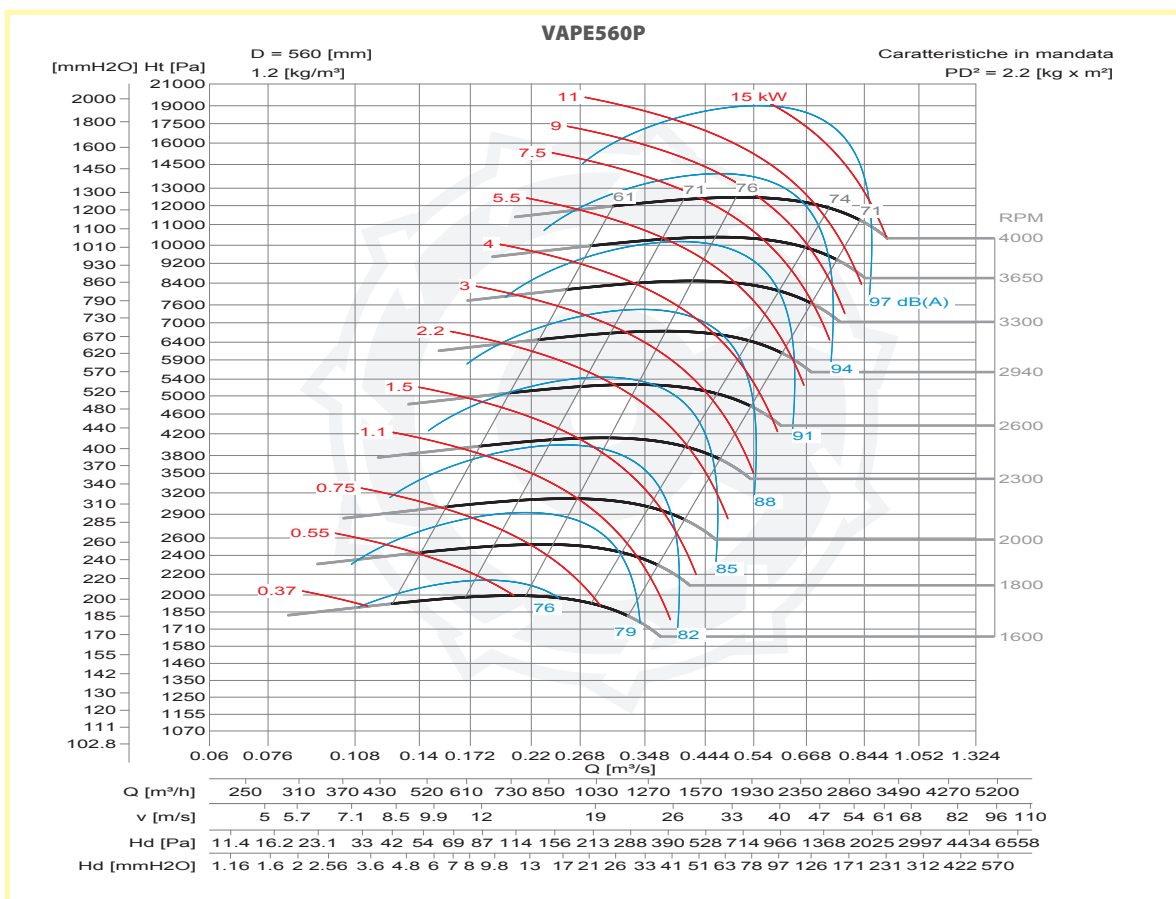
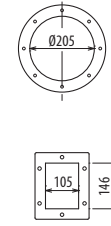
Il ventilatore è orientabile • Peso in tabella comprensivo di motore

- Le ventilateur est orientable
  - The fan is revolvable
  - Der Ventilator ist drehbar
  - El ventilador es orientable
- Le poids dans le tableau inclut le moteur The weight indicated in the table includes motor Gewichtsangabe in Tabelle inkl. Motor El peso en la tabla incluye el motor

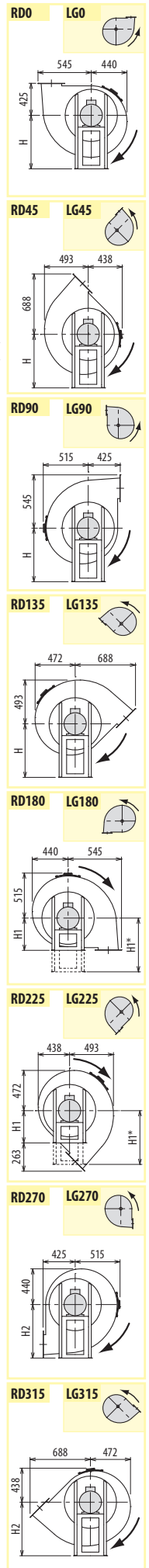
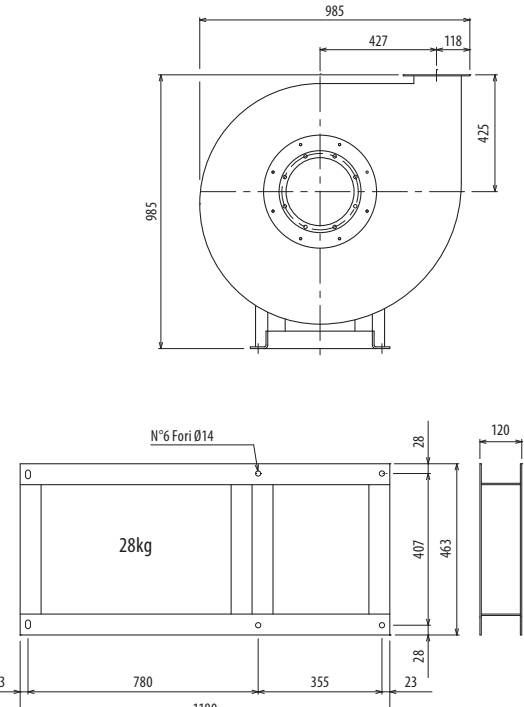
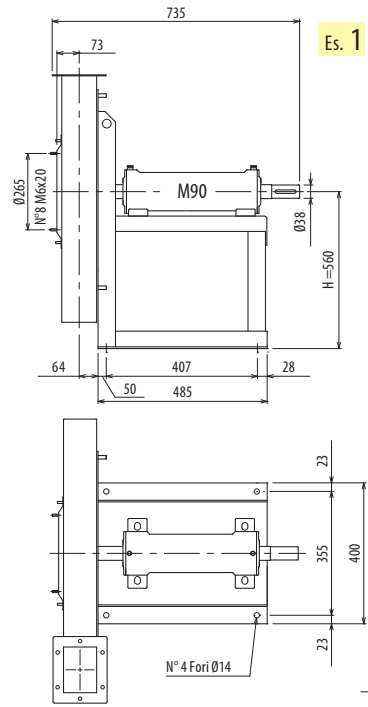
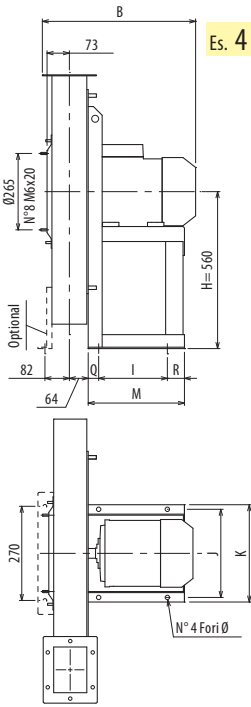
Ulteriori informazioni e quote:  
 ■ Ulérieures informations et cotes:  
 ■ Further information and sizes:  
 ■ Weitere Infos und Größen:  
 ■ Más informaciones y medidas:

| TIPO - Type     |              | PESO Weight | PD <sup>2</sup>      | B   | I   | H   | H1   | H2  | J   | K   | M   | Q  | R  | Ø  |
|-----------------|--------------|-------------|----------------------|-----|-----|-----|------|-----|-----|-----|-----|----|----|----|
| VENTILATORE Fan | MOTORE Motor | Kg          | Kgf x m <sup>2</sup> |     |     |     |      |     |     |     |     |    |    |    |
| VAPES60/P2R     | 112 M2       | 106         | 1,7                  | 478 | 197 | 500 | 500* | 500 | 289 | 324 | 276 | 30 | 49 | 12 |
| VAPES60/P2R     | 132 SA2      | 120         | 1,7                  | 518 | 237 | 500 | 500* | 500 | 337 | 372 | 336 | 40 | 59 | 12 |
| VAPES60/P2      | 132 SA2      | 122         | 2,2                  | 518 | 237 | 500 | 500* | 500 | 337 | 372 | 336 | 40 | 59 | 12 |
| VAPES60/P2      | 132 SB2      | 122         | 2,2                  | 518 | 237 | 500 | 500* | 500 | 337 | 372 | 336 | 40 | 59 | 12 |
| VAPES60/P/T     |              | 100         | 2,2                  |     |     | 500 | 375  | 500 |     |     |     |    |    |    |

pg. / s. 4,6  
 pg. / s. 4,5



VAPE/P



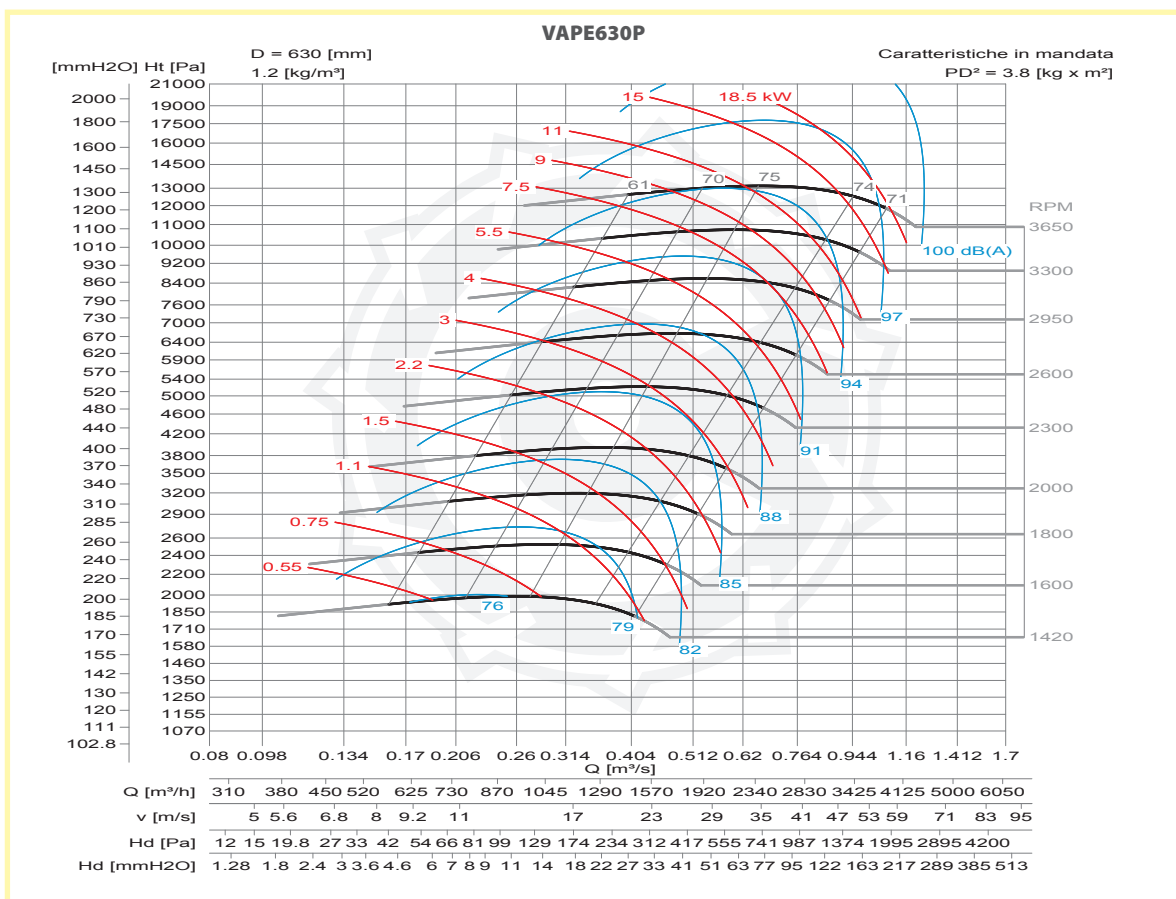
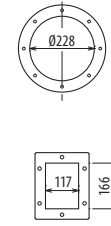
Il ventilatore è orientabile • Peso in tabella comprensivo di motore

- Le ventilateur est orientable
  - The fan is revolvable
  - Der Ventilator ist drehbar
  - El ventilador es orientable
- Le poids dans le tableau inclut le moteur    The weight indicated in the table includes motor    Gewichtsangabe in Tabelle inkl. Motor    El peso en la tabla incluye el motor

Ulteriori informazioni e cote:  
■ Ulérieures informations et cotes:  
■ Further information and sizes:  
■ Weitere Infos und Größen:  
■ Más informaciones y medidas:

| TIPO - Type     |              | PESO Weight | PD <sup>2</sup>      | B   | I   | H   | H1   | H2  | J   | K   | M   | Q  | R  | Ø  |
|-----------------|--------------|-------------|----------------------|-----|-----|-----|------|-----|-----|-----|-----|----|----|----|
| VENTILATORE Fan | MOTORE Motor | Kg          | Kgf x m <sup>2</sup> |     |     |     |      |     |     |     |     |    |    |    |
| VAPE630/P2R     | 132 SA2      | 146         | 3                    | 530 | 237 | 560 | 560* | 560 | 337 | 372 | 336 | 40 | 59 | 12 |
| VAPE630/P2R     | 132 SB2      | 146         | 3                    | 530 | 237 | 560 | 560* | 560 | 337 | 372 | 336 | 40 | 59 | 12 |
| VAPE630/P2      | 132 SB2      | 148         | 3,8                  | 530 | 237 | 560 | 560* | 560 | 337 | 372 | 336 | 40 | 59 | 12 |
| VAPE630/P2      | 160 MA2      | 182         | 3,8                  | 635 | 337 | 560 | 560* | 560 | 395 | 440 | 436 | 50 | 49 | 14 |
| VAPE630/P/T     |              | 133         | 3,8                  |     |     | 560 | 425  | 560 |     |     |     |    |    |    |

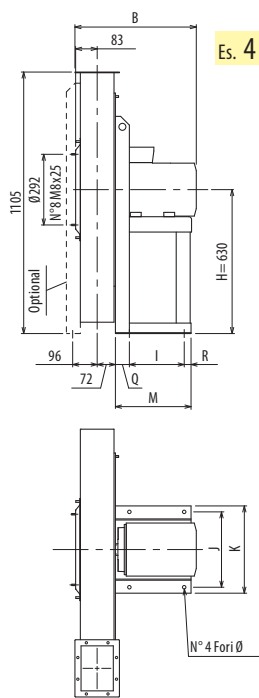
pg. / s. 4,6  
pg. / s. 4,5



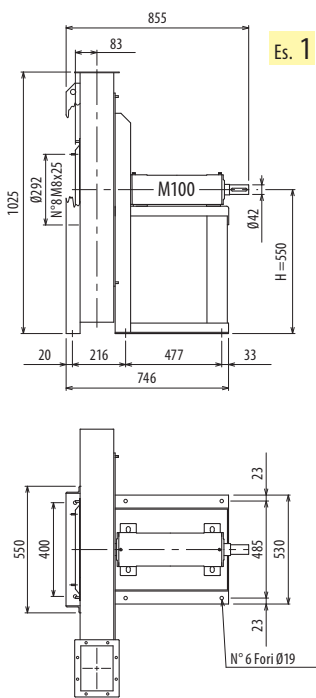
# DIMENSIONI D'INGOMBRO E PESI/CURVE DI FUNZIONAMENTO

■ DIMENSIONS D'ENCOMBREMENT ET POIDS/COURBES DE FONCTIONNEMENT ■ OVERALL DIMENSIONS AND WEIGHT/WORKING CURVES  
 ■ AUSMAßE UND GEWICHTE/FUNKTIONSKURVEN ■ DIMENSIONES QUE OCUPA Y PESOS/CURVAS DE FUNCIONAMIENTO

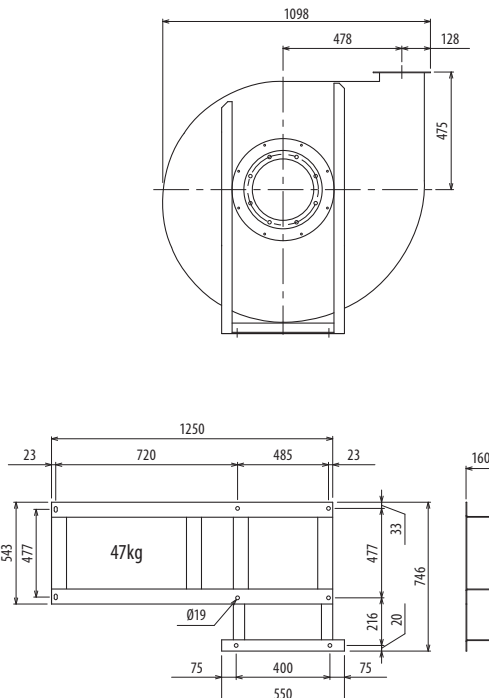
# VAPE710/P



Es. 4



Es. 1



Il ventilatore in Es. 4 senza supporto anteriore è orientabile, in Es. 1 non è orientabile • Peso in tabella comprensivo di motore

- Le ventilateur en Ex. 4 sans support frontal est orientable, en Ex. 1 n'est pas orientable. ■ The fan in Ex. 4 without front support is revolvable, in Ex. 1 is not revolvable.
- Le poids dans le tableau inclut le moteur The weight indicated in the table includes motor
- Der Ventilator in Aus. 4, ohne Vorderhalterung, ist drehbar; in Aus. 1 ist nicht drehbar. ■ El ventilador en Ej. 4 sin soporte delantero es orientable, en Ej. 1 no es orientable.
- Das Gewicht in Tafel schließt den Motor ein El peso en la tabla incluye el motor

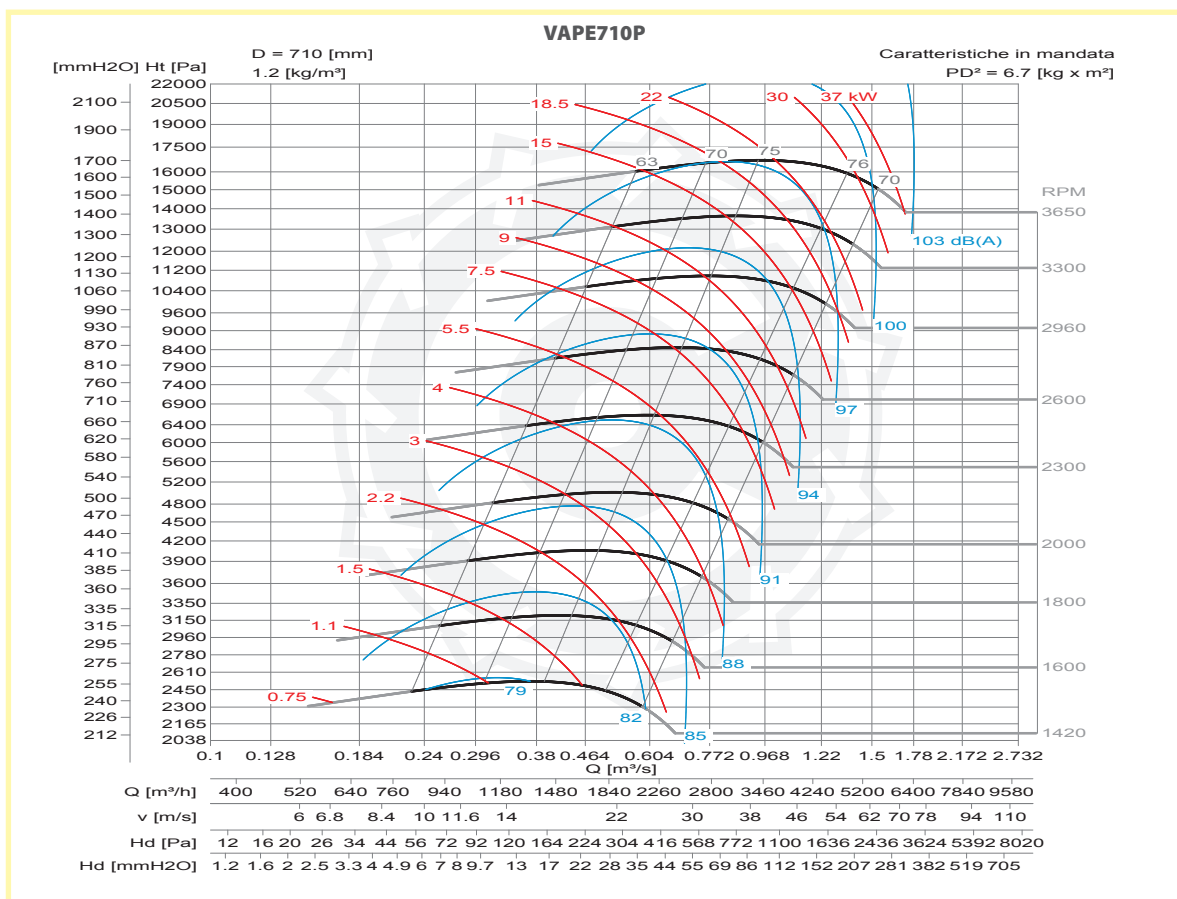
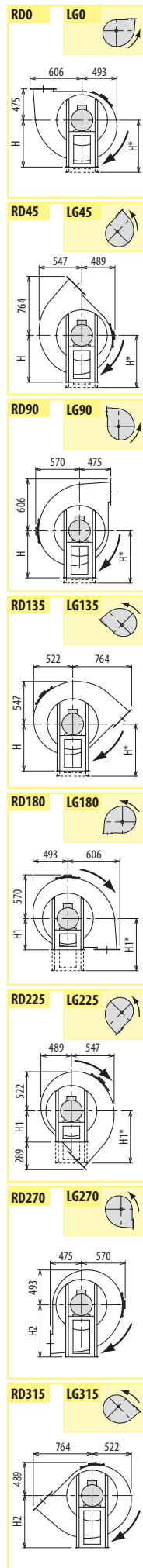
Ulteriori informazioni e quote:  
 ■ Ulérieures informations et cotes:  
 ■ Further information and sizes:  
 ■ Weitere Infos und Größen:  
 ■ Más informaciones y medidas:

| TIPO - Type     |              | PESO Weight | PD <sup>2</sup>      |     |     |      |      |     |     |     |     |    |    |    |
|-----------------|--------------|-------------|----------------------|-----|-----|------|------|-----|-----|-----|-----|----|----|----|
| VENTILATORE Fan | MOTORE Motor | Kg          | Kgf x m <sup>2</sup> | B   | I   | H    | H1   | H2  | J   | K   | M   | Q  | R  | Ø  |
| VAPE710/P2R     | 160 MA2      | 218         | 5,5                  | 650 | 337 | 630* | 630* | 630 | 395 | 440 | 436 | 50 | 49 | 14 |
| VAPE710/P2R     | 160 MB2      | 218         | 5,5                  | 650 | 337 | 630* | 630* | 630 | 395 | 440 | 436 | 50 | 49 | 14 |
| VAPE710/P2      | 160 MB2      | 221         | 6,7                  | 650 | 337 | 630* | 630* | 630 | 395 | 440 | 436 | 50 | 49 | 14 |
| VAPE710/P2      | 160 L2       | 233         | 6,7                  | 650 | 337 | 630* | 630* | 630 | 395 | 440 | 436 | 50 | 49 | 14 |
| VAPE710/P2      | 180 M2       | 290         | 6,7                  | 731 | 357 | 630* | 630* | 630 | 434 | 488 | 460 | 70 | 33 | 17 |
| VAPE710/P/T     |              | 183         | 6,7                  |     |     | 550  | 475  | 630 |     |     |     |    |    |    |

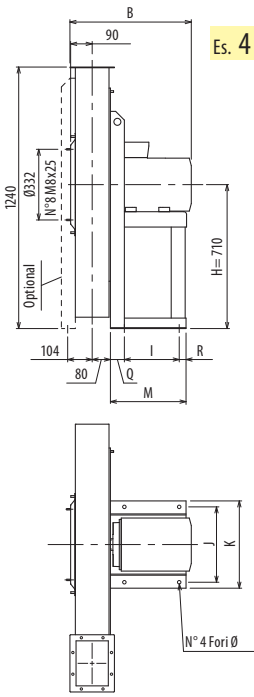
pg. / s. 4,6



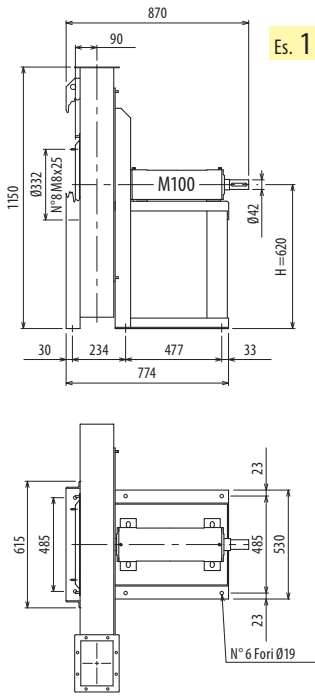
pg. / s. 4,5



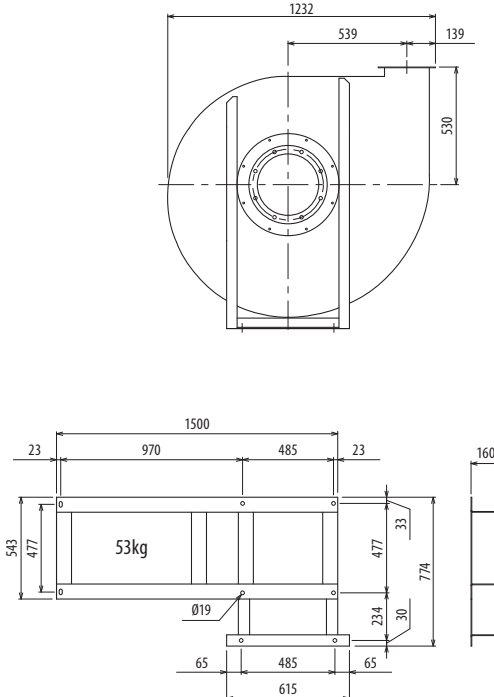
VAPE/P



Es. 4



Es. 1



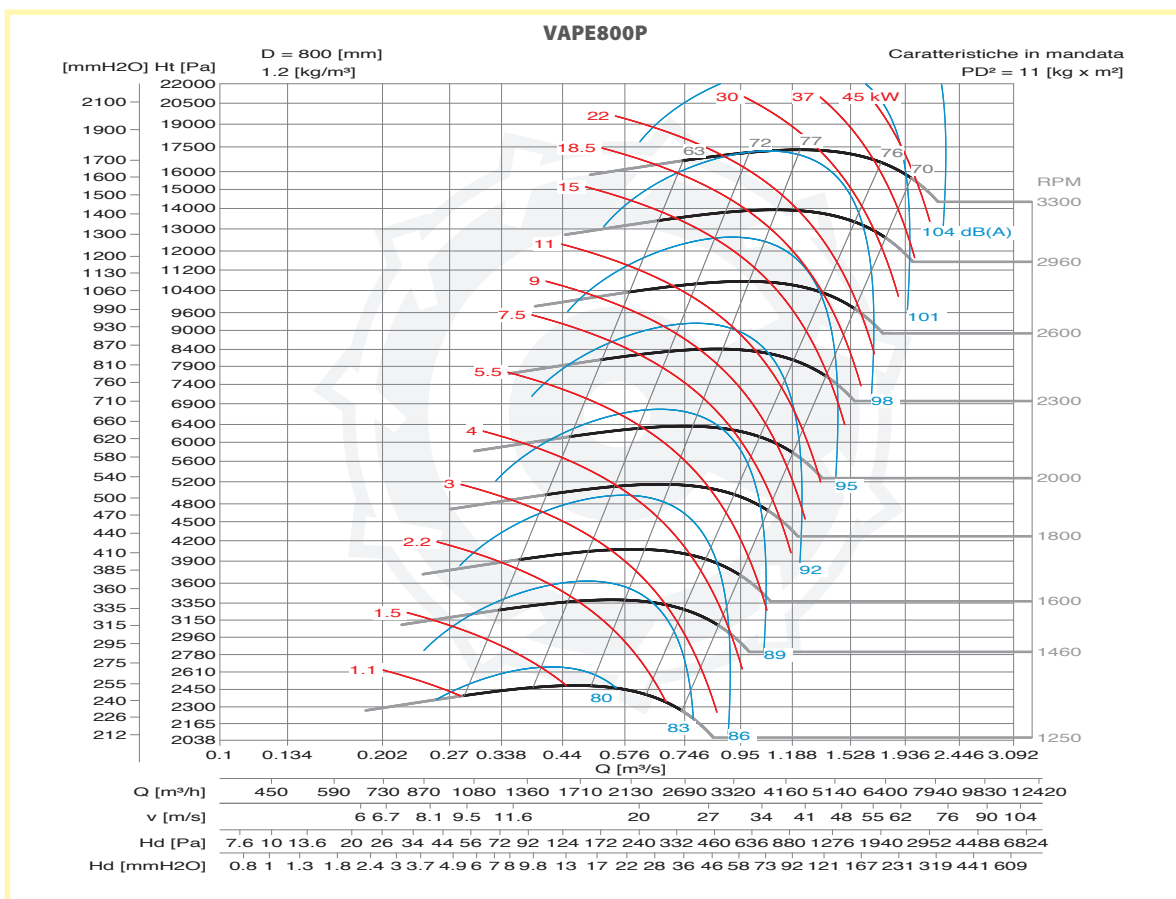
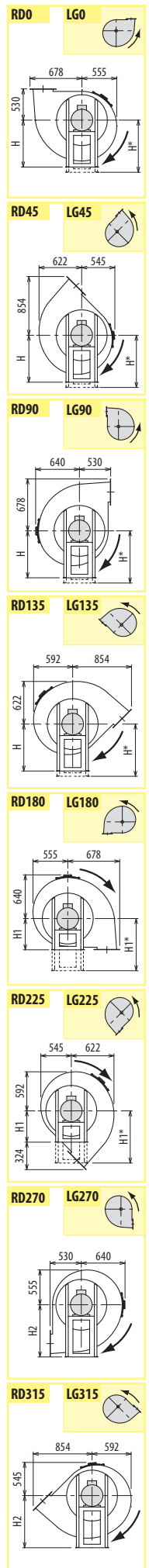
Il ventilatore in Es. 4 senza supporto anteriore è orientabile, in Es. 1 non è orientabile • Peso in tabella comprensivo di motore

- Le ventilateur in Ex. 4 sans support frontal est orientable, in Ex. 1 n'est pas orientable. Le poids dans le tableau inclut le moteur
- Der Ventilator in Aus. 4, ohne Vorderhalterung, ist drehbar; in Aus. 1 ist nicht drehbar. Das Gewicht in Tafel schließt den Motor ein
- The fan in Ex. 4 without front support is revolvable, in Ex. 1 is not revolvable. The weight indicated in the table includes motor
- El ventilador en Ej. 4 sin soporte delantero es orientable, en Ej. 1 no es orientable. El peso en la tabla incluye el motor

Ulteriori informazioni e quote:  
■ Ulérieures informations et cotes:  
■ Further information and sizes:  
■ Weitere Infos und Größen:  
■ Más informaciones y medidas:

| TIPO - Type     |              | PESO Weight | PD <sup>2</sup> | DIMENSIONI |                      |      |      |     |     |     |     |    |    |    |
|-----------------|--------------|-------------|-----------------|------------|----------------------|------|------|-----|-----|-----|-----|----|----|----|
| VENTILATORE Fan | MOTORE Motor |             |                 | Kg         | Kgf x m <sup>2</sup> | B    | I    | H   | H1  | H2  | J   | K  | M  | Q  |
| VAPE800/P2R     | 180 M2       | 325         | 8,6             | 748        | 357                  | 710* | 710* | 710 | 434 | 488 | 460 | 70 | 33 | 17 |
| VAPE800/P2R     | 200 LA2      | 414         | 8,6             | 856        | 381                  | 710* | 710* | 710 | 506 | 568 | 500 | 80 | 39 | 19 |
| VAPE800/P2      | 200 LA2      | 421         | 11              | 856        | 381                  | 710* | 710* | 710 | 506 | 568 | 500 | 80 | 39 | 19 |
| VAPE800/P2      | 200 LB2      | 421         | 11              | 856        | 381                  | 710* | 710* | 710 | 506 | 568 | 500 | 80 | 39 | 19 |
| VAPE800/P/T     |              | 218         | 11              |            |                      | 620  | 530  | 710 |     |     |     |    |    |    |

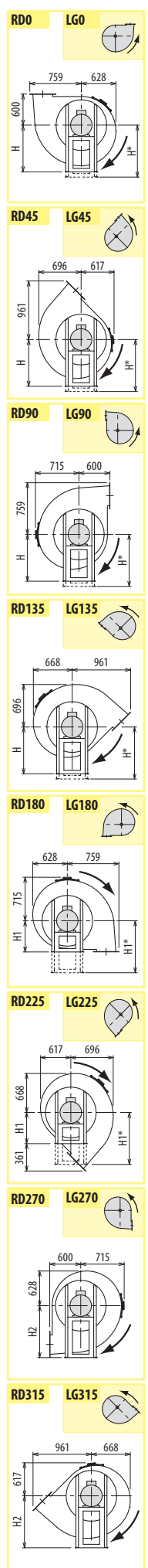
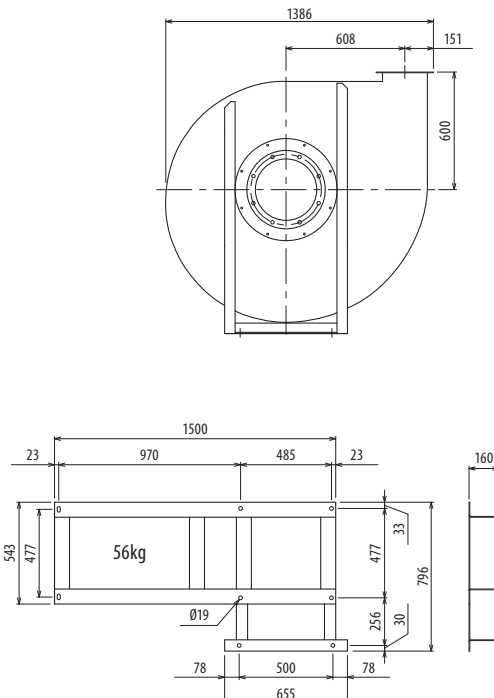
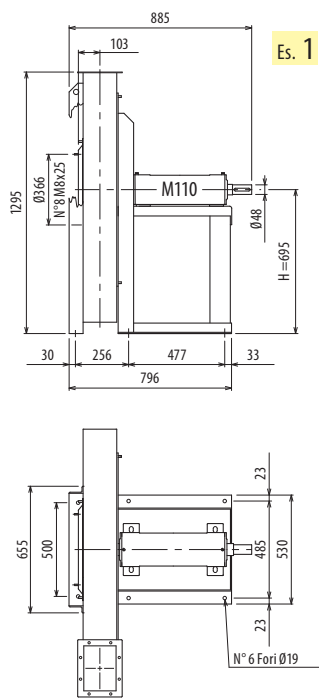
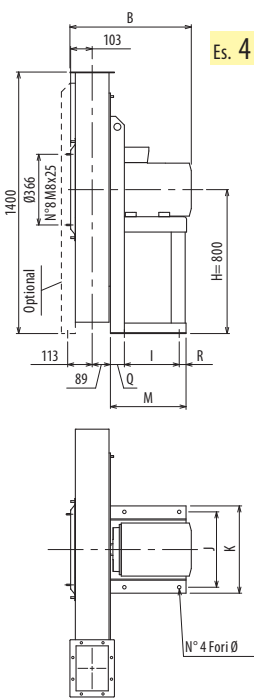
pg. / s. 4,6  
pg. / s. 4,5



# DIMENSIONI D'INGOMBRO E PESI/CURVE DI FUNZIONAMENTO

■ DIMENSIONS D'ENCOMBREMENT ET POIDS/COURBES DE FONCTIONNEMENT ■ OVERALL DIMENSIONS AND WEIGHT/WORKING CURVES  
 ■ AUSMAßE UND GEWICHTE/FUNKTIONSKURVEN ■ DIMENSIONES QUE OCUPA Y PESOS/CURVAS DE FUNCIONAMIENTO

# VAPE900/P



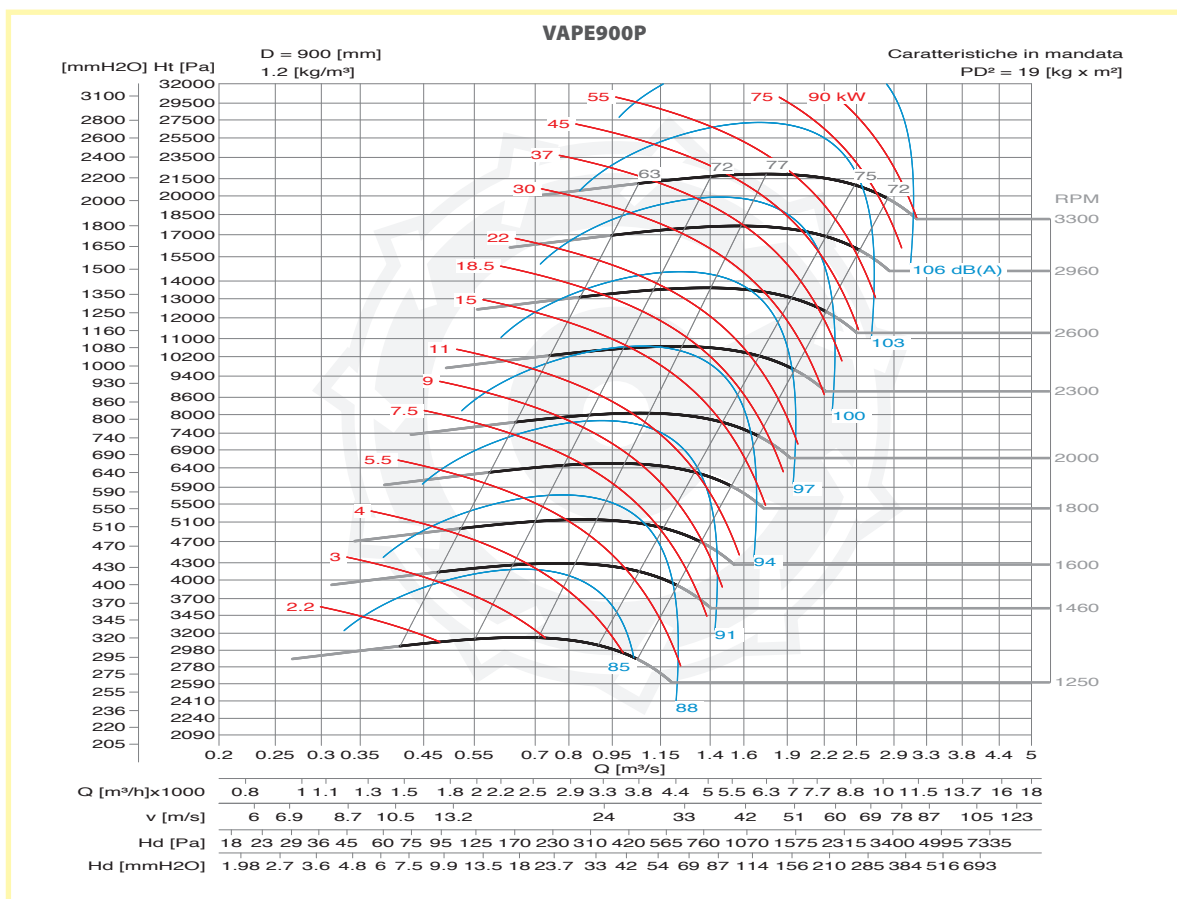
Il ventilatore in Es. 4 senza supporto anteriore è orientabile, in Es. 1 non è orientabile • Peso in tabella comprensivo di motore

- Le ventilateur en Ex. 4 sans support frontal est orientable, en Ex. 1 n'est pas orientable. ■ The fan in Ex. 4 without front support is revolvable, in Ex. 1 is not revolvable.
- Le poids dans le tableau inclut le moteur The weight indicated in the table includes motor
- Der Ventilator in Aus. 4, ohne Vorderhalterung, ist drehbar; in Aus. 1 ist nicht drehbar. ■ El ventilador en Ej. 4 sin soporte delantero es orientable, en Ej. 1 no es orientable.
- Das Gewicht im Tafel schließt den Motor ein El peso en la tabla incluye el motor

Ulteriori informazioni e quote:  
 ■ Ulérieures informations et cotes:  
 ■ Further information and sizes:  
 ■ Weitere Infos und Größen:  
 ■ Más informaciones y medidas:

| TIPO - Type     |              | PESO Weight | PD <sup>2</sup>      |      |     |      |      |     |     |     |     |    |    |    |
|-----------------|--------------|-------------|----------------------|------|-----|------|------|-----|-----|-----|-----|----|----|----|
| VENTILATORE Fan | MOTORE Motor | Kg          | Kgf x m <sup>2</sup> | B    | I   | H    | H1   | H2  | J   | K   | M   | Q  | R  | Ø  |
| VAPE900/P2R     | 200 LB2      | 542         | 14                   | 874  | 381 | 800* | 800* | 800 | 506 | 568 | 500 | 80 | 39 | 19 |
| VAPE900/P2R     | 225 M2       | 622         | 14                   | 916  | 421 | 800* | 800* | 800 | 556 | 616 | 540 | 80 | 39 | 19 |
| VAPE900/P2R     | 250 M2       | 743         | 14                   | 1024 | 501 | 800* | 800* | 800 | 604 | 690 | 600 | 60 | 39 | 19 |
| VAPE900/P2      | 250 M2       | 746         | 19                   | 1024 | 501 | 800* | 800* | 800 | 604 | 690 | 600 | 60 | 39 | 19 |
| VAPE900/P2      | 280 S2       | 876         | 19                   | 1027 | 591 | 800* | 800* | 800 | 690 | 750 | 697 | 60 | 46 | 21 |
| VAPE900/P/T     |              | 320         | 19                   |      |     | 695  | 600  | 800 |     |     |     |    |    |    |

pg. / s. 4,6  
 pg. / s. 4,5



VAPE/P



## CORAL ENGINEERING SRL

Via Venezia 4/6 - 20060 Trezzano Rosa (MI) ITALY

• +39 02 95301003 - Fax +39 02 95301004

e-mail: [info@coral.it](mailto:info@coral.it) <http://www.coral.it>

**SOCIETÀ DI ENGINEERING - SOCIÉTÉS D'INGENIERIE - ENGINEERING SISTER COMPANIES - INGENIEURFIRMEN - SOCIEDADES DE INGENIERIA**

### ITALIA

MILANO • +39 02 95301003  
TORINO • +39 011 9980141  
VICENZA • +39 0444 348999

### FRANCE

LYON • +33 4 74 944 562  
PARIS • +33 1 60 868 069  
POITIERS • +33 5 49 379 596

### ENGLAND

LITTLEBOROUGH ROCHDALE • +44 1 706 373100