

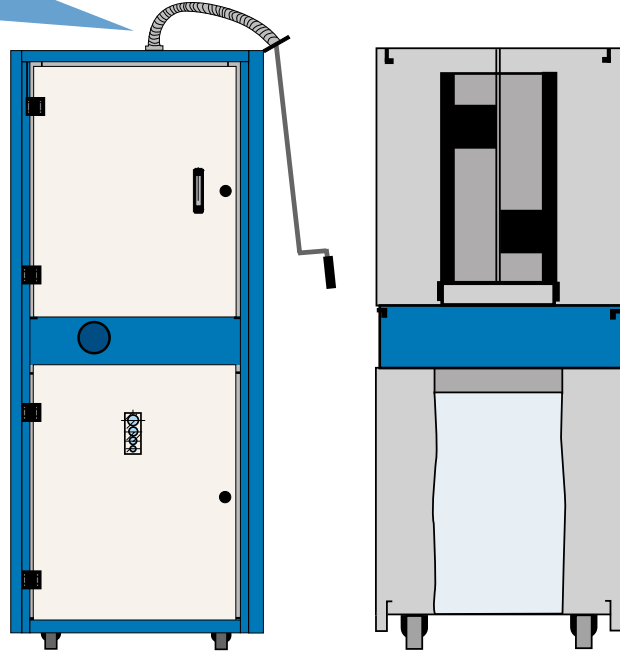
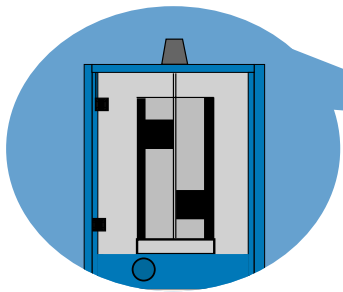


## MOD 100

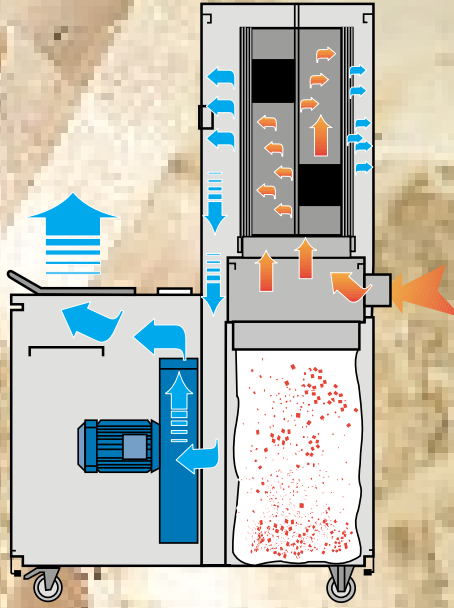


Modello Modelle Model Typ	100
Potenza - Puissance Power - Leistung	2 HP 1,5 Kw
Superficie filtrante - Surface filtrante Filtering area - Filterfläche	4,5 m <sup>2</sup> 48,5 Sq.ft
Portata max - Debit max Max delivery - Luftmenge max	900 m <sup>3</sup> /h 529 cfm
Pressione totale - Pression total Total head - Gesamtdruckerhöhung	2500 Pa 255 mm/H <sub>2</sub> O
Livello sonoro - Niveau sonore Average sound level - Schallpegel	64 dB(A)
Ø Bocca aspirante Ø Bouche aspirante Ø Intake opening Ø Absaugstutzen	100 mm 4" inch
Peso - Poids Weight - Gewicht	170 Kg 375 lb

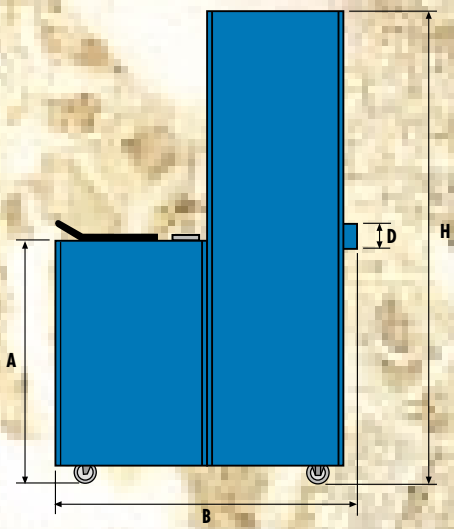
# EUROFILTER



## EUROFILTER 100

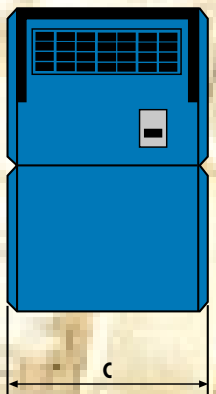


	DIMENSIONI DI INGOMBRO (mm) - DIMENSIONS D' ENCOMBREMENT (mm) OVERALL DIMENSIONS (mm) - ABMESSUNGEN (mm)				
	A	B	H	C	D
EUROFILTER 100	970	1210	1890	760	100



**OPTIONAL**  
**Cartuccia con pulizia a motore mod. D**

**Cartridge with motori sed cleaning system mod. D**



**CORAL Engineering s.r.l. - Via Venezia, 4/6 - 20060 Trezzano Rosa (Milano) ITALY**

+39 02 95301003 r.a. Fax +39 02 95301004 e-mail [info@coral.it](mailto:info@coral.it) <http://www.coral.it>